



CÂMARA MUNICIPAL

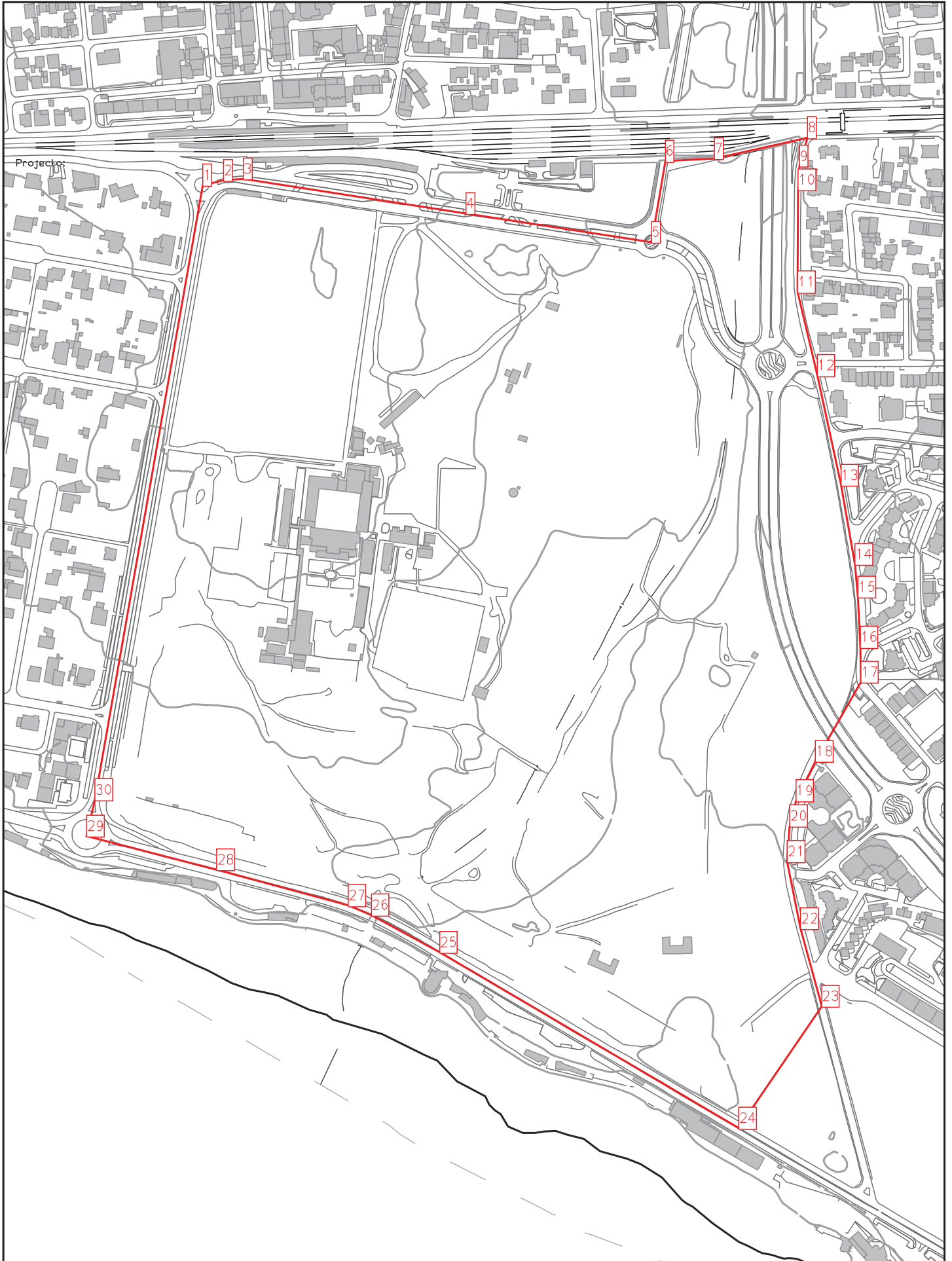
PLANTA DE LOCALIZAÇÃO



NORTE



Escala 1:25000



NORTE



Escala 1:5000

Projecto:

1	-	X:	-104827.9	-	Y:	-108205.7
2	-	X:	-104807.1	-	Y:	-108200.9
3	-	X:	-104787.2	-	Y:	-108199.5
4	-	X:	-104562.2	-	Y:	-108234.3
5	-	X:	-104374.9	-	Y:	-108263.3
6	-	X:	-104361.0	-	Y:	-108181.6
7	-	X:	-104311.5	-	Y:	-108178.8
8	-	X:	-104217.4	-	Y:	-108157.7
9	-	X:	-104225.7	-	Y:	-108186.4
10	-	X:	-104226.9	-	Y:	-108210.3
11	-	X:	-104227.3	-	Y:	-108313.5
12	-	X:	-104207.7	-	Y:	-108397.9
13	-	X:	-104183.7	-	Y:	-108508.7
14	-	X:	-104169.3	-	Y:	-108588.6
15	-	X:	-104166.2	-	Y:	-108621.7
16	-	X:	-104164.1	-	Y:	-108672.4
17	-	X:	-104163.6	-	Y:	-108707.7
18	-	X:	-104209.3	-	Y:	-108787.6
19	-	X:	-104229.2	-	Y:	-108827.3
20	-	X:	-104235.3	-	Y:	-108852.8
21	-	X:	-104237.9	-	Y:	-108888.8
22	-	X:	-104224.3	-	Y:	-108956.4
23	-	X:	-104203.2	-	Y:	-109034.8
24	-	X:	-104286.7	-	Y:	-109158.1
25	-	X:	-104588.8	-	Y:	-108980.4
26	-	X:	-104657.9	-	Y:	-108942.8
27	-	X:	-104681.3	-	Y:	-108933.2
28	-	X:	-104813.9	-	Y:	-108897.0
29	-	X:	-104945.3	-	Y:	-108863.0
30	-	X:	-104936.9	-	Y:	-108826.4

Área (m²): 541679.3
Perímetro (m): 3138.1

NOTA: Coordenadas em metros referentes ao sistema de referência PT-TM06/ETRS89