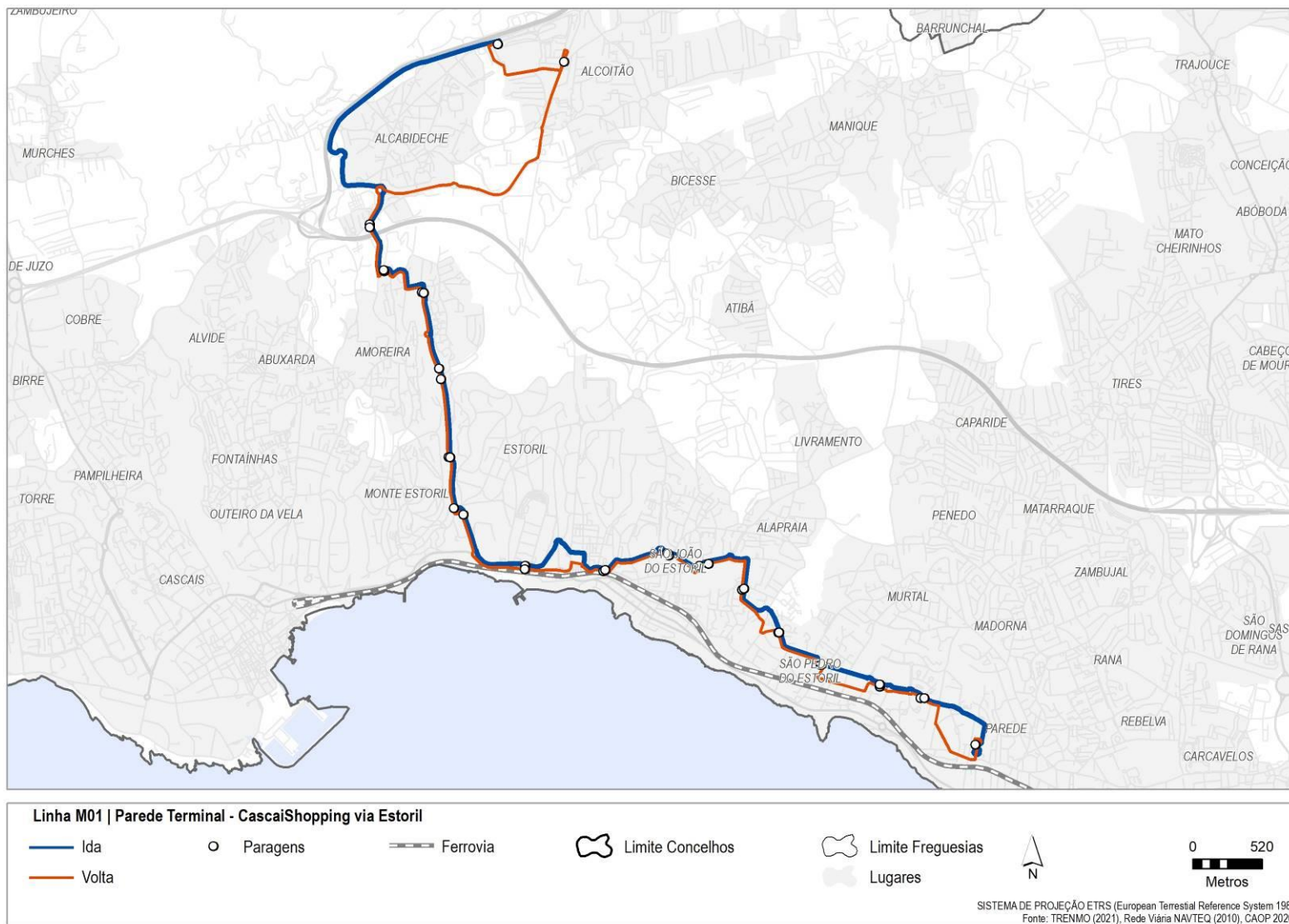
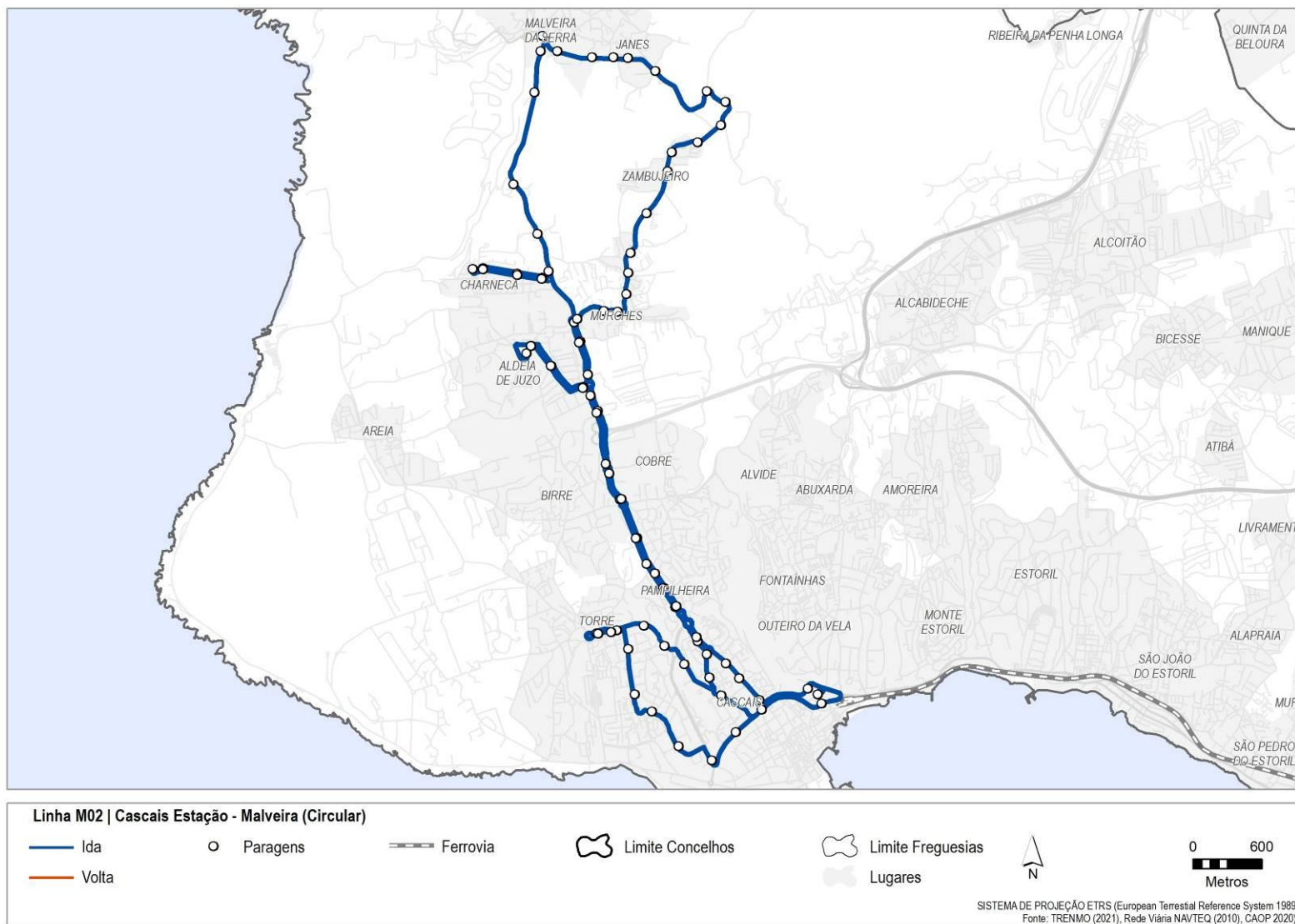
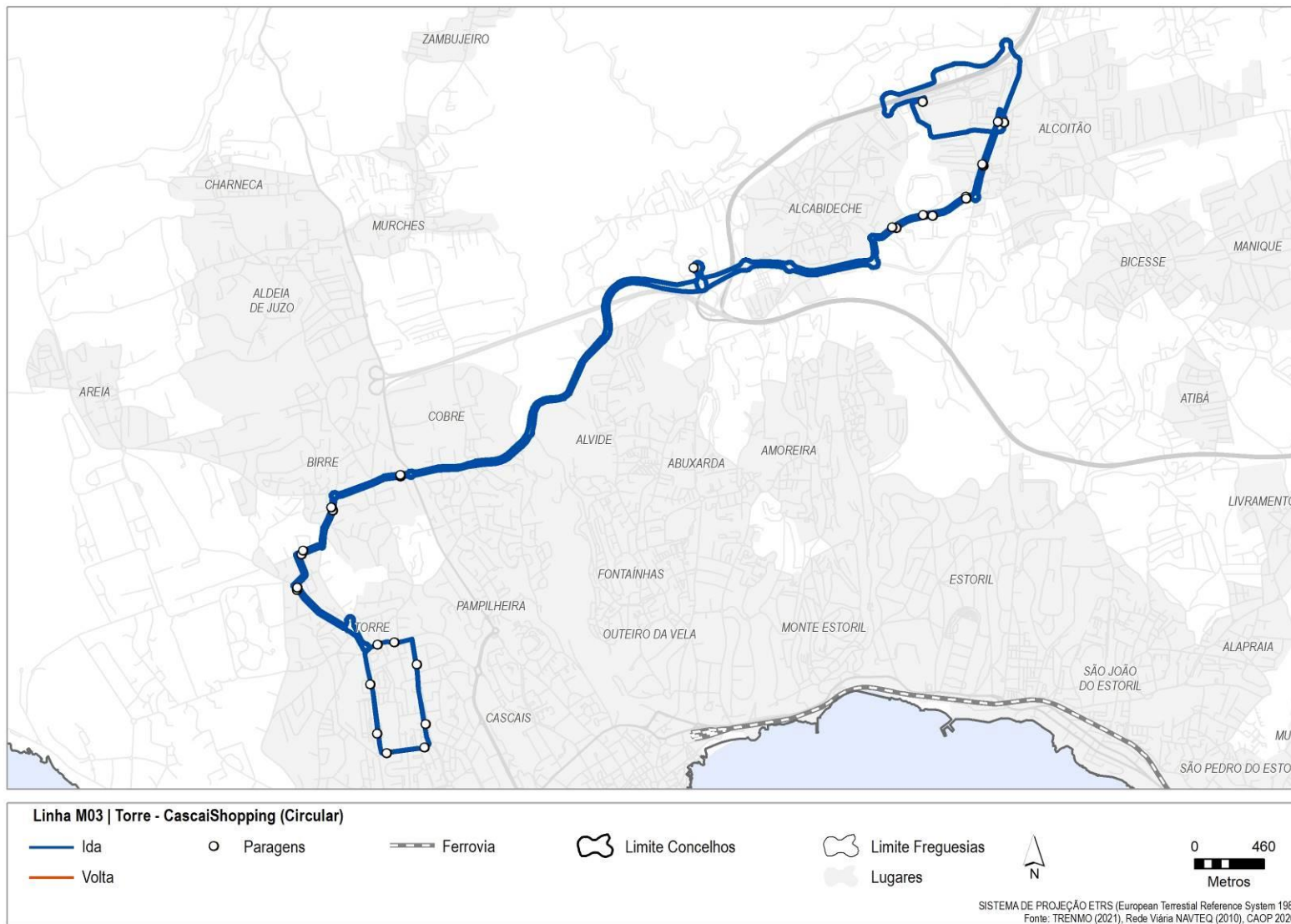
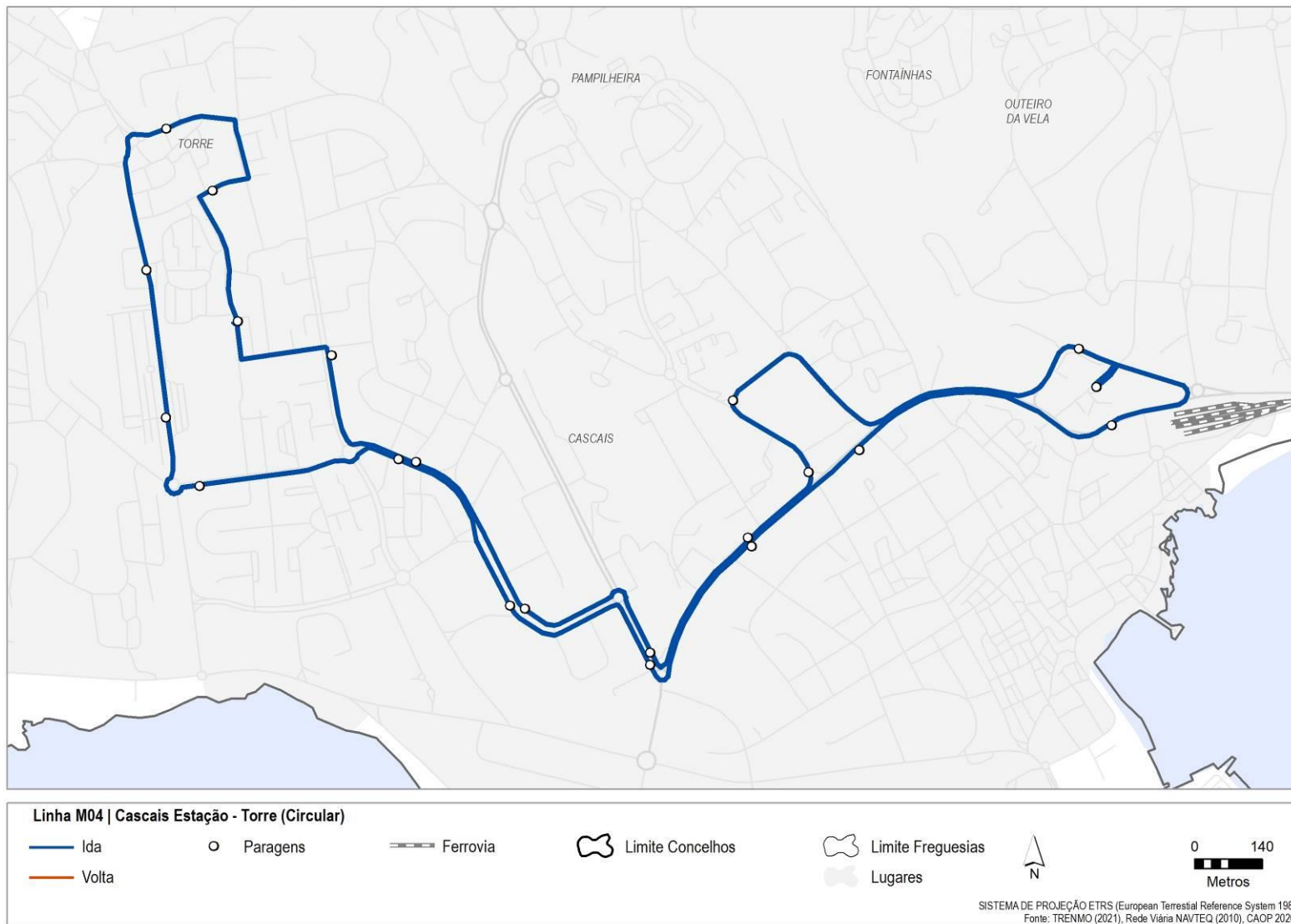


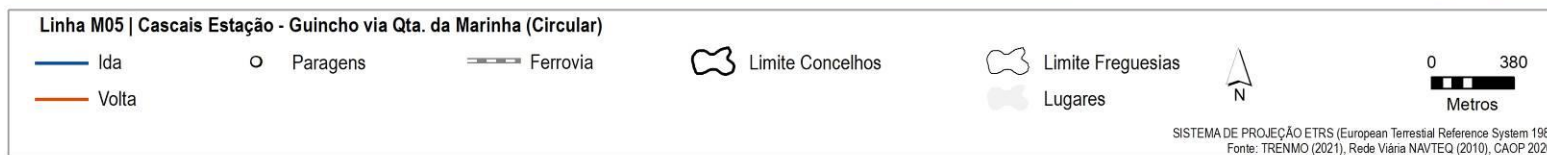
Anexo A - Rede Municipal

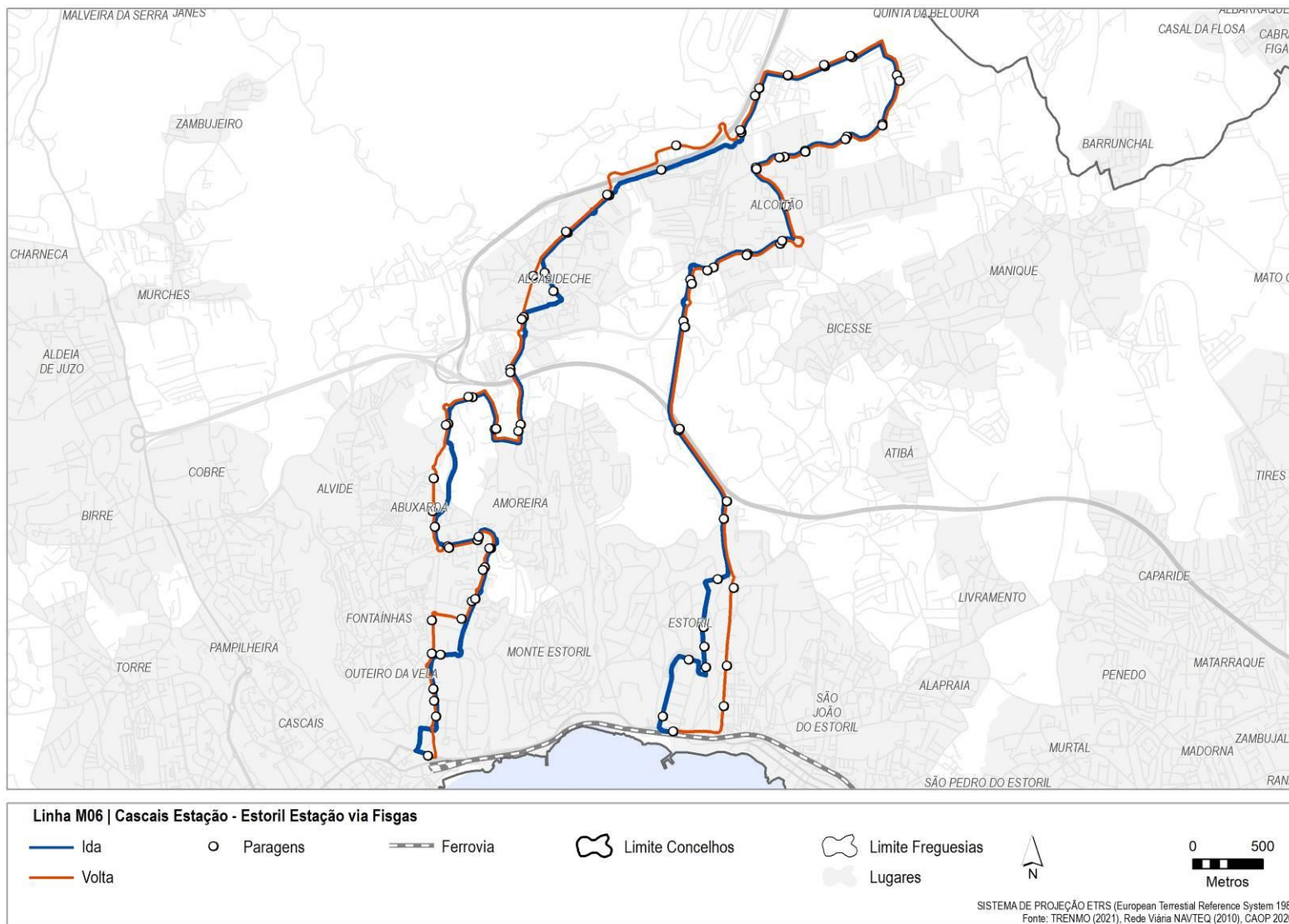


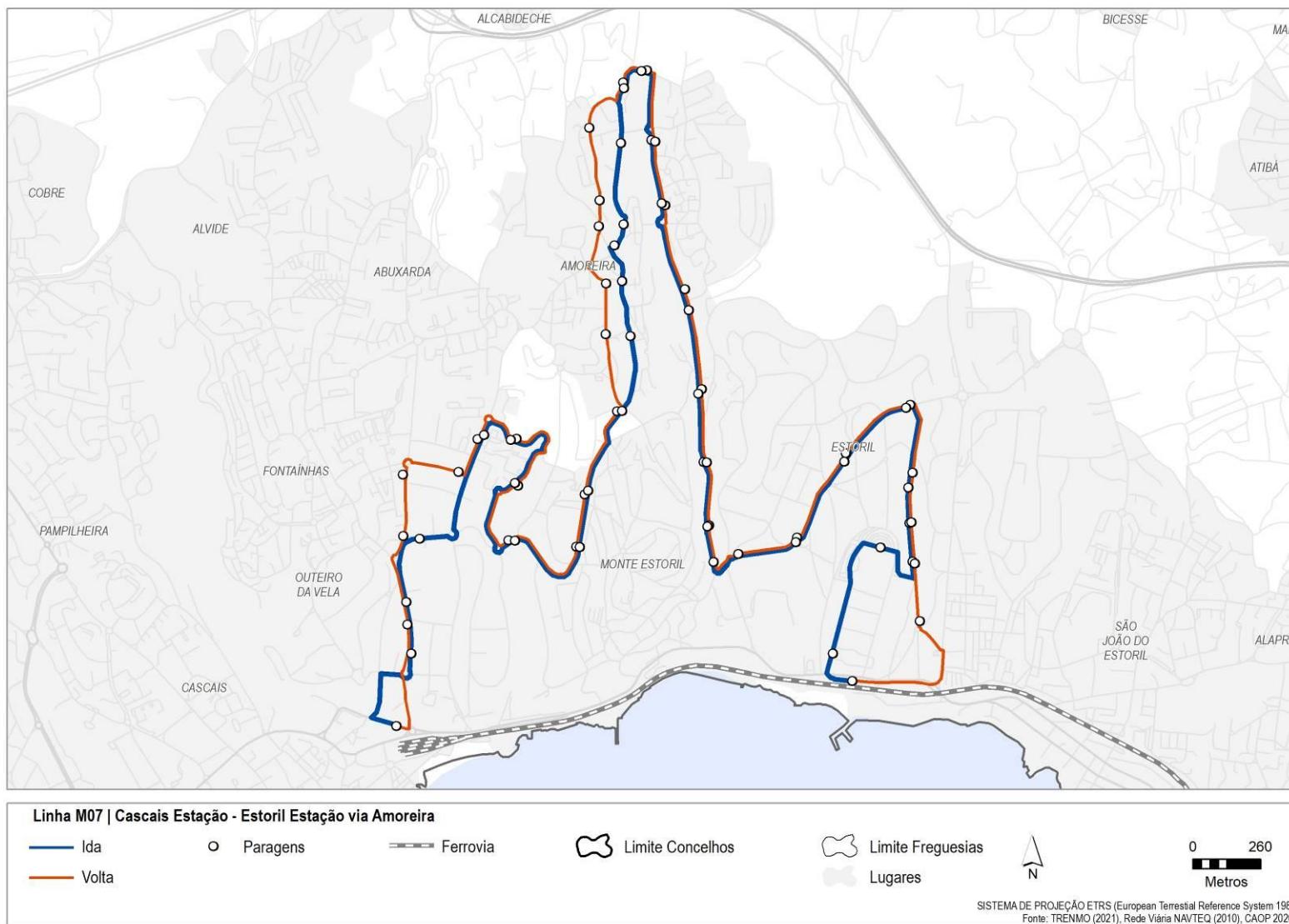


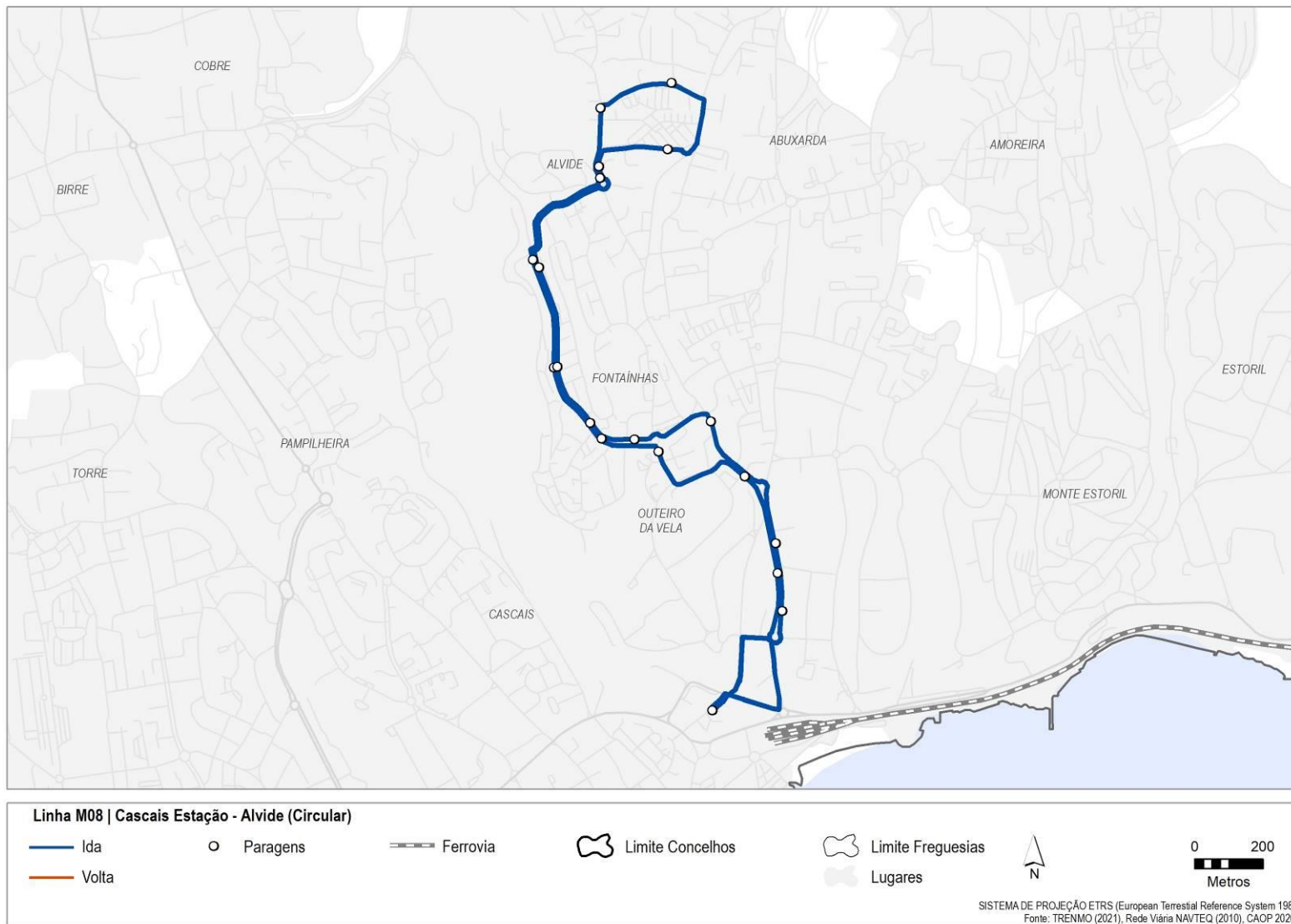


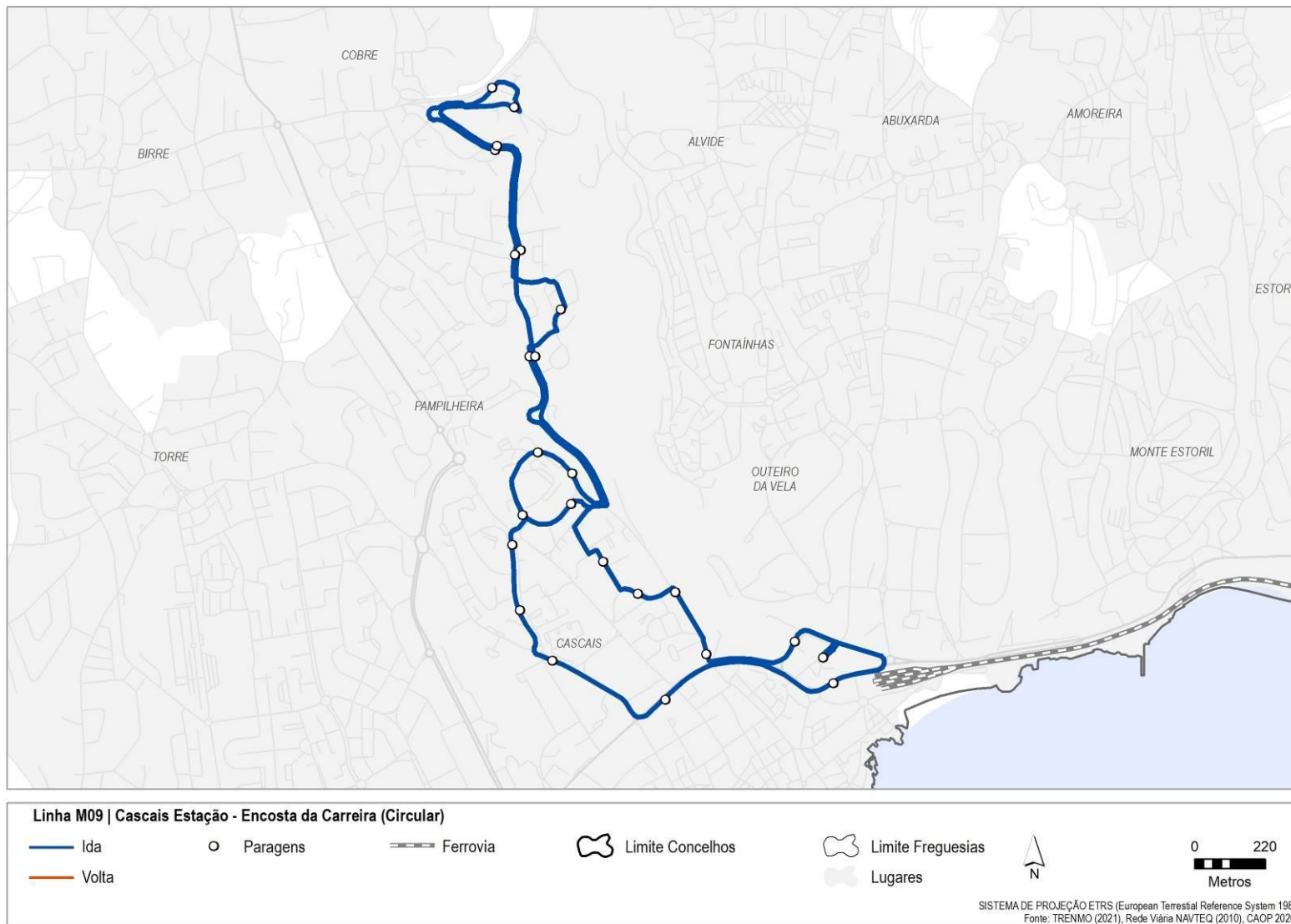


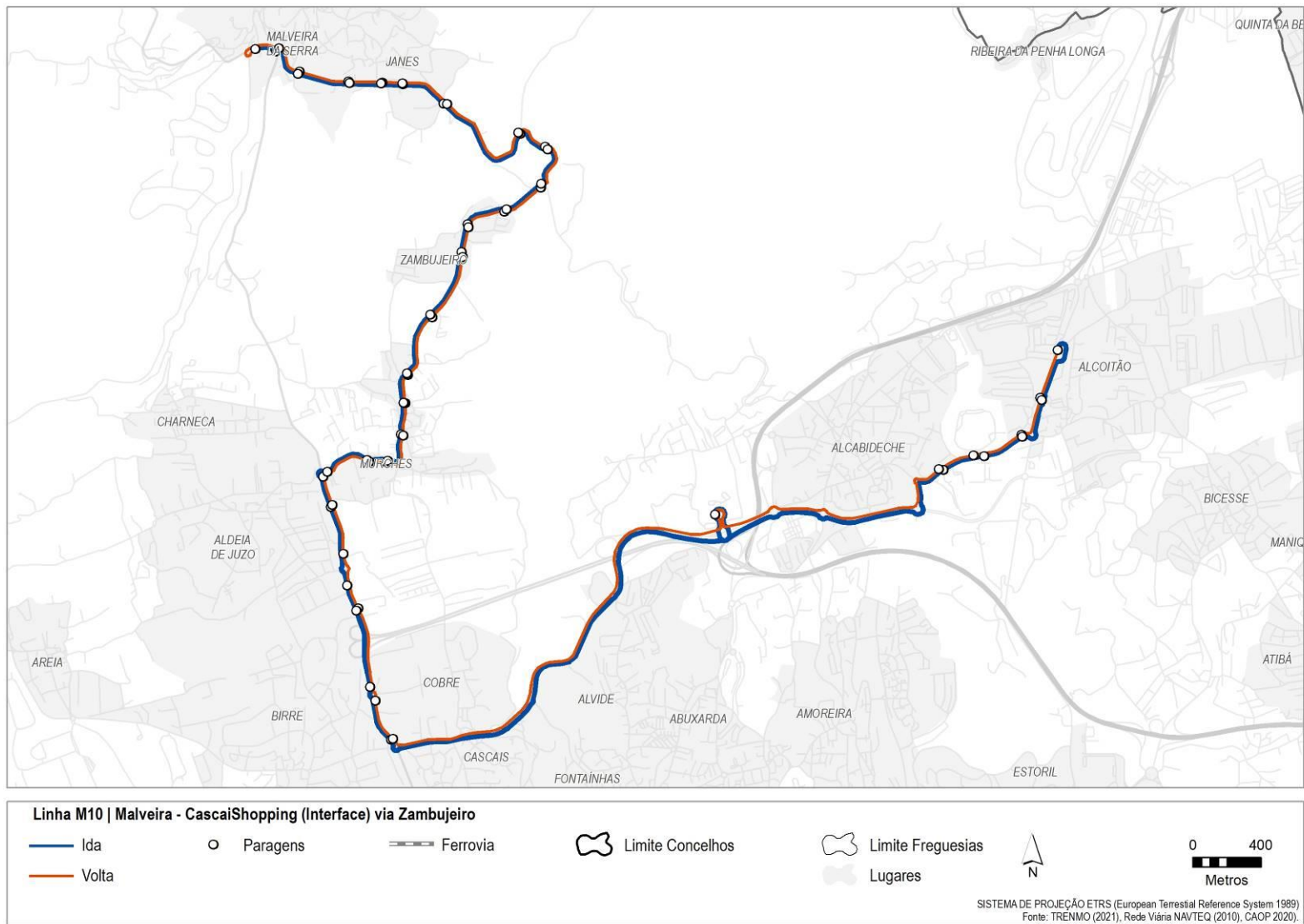


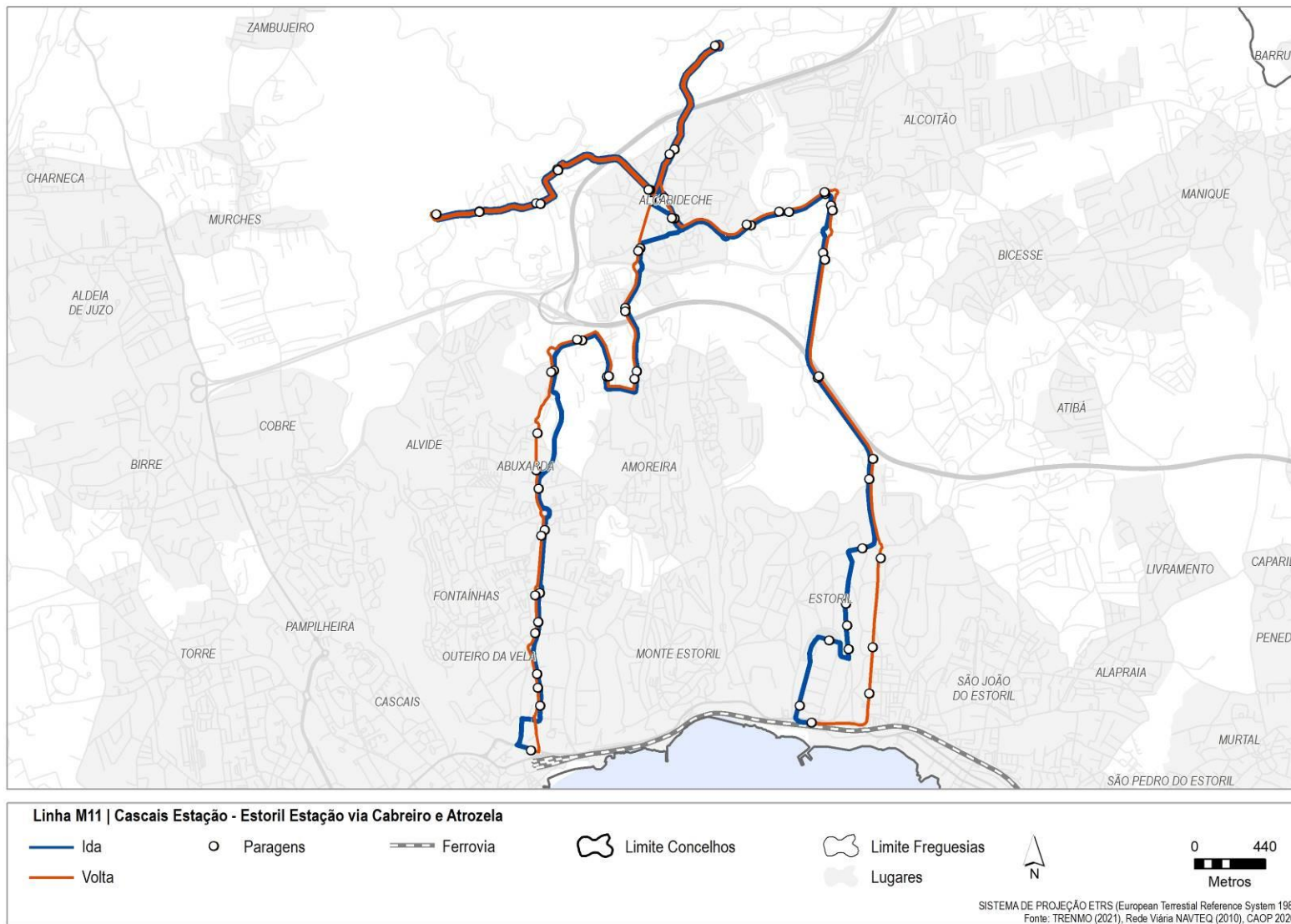


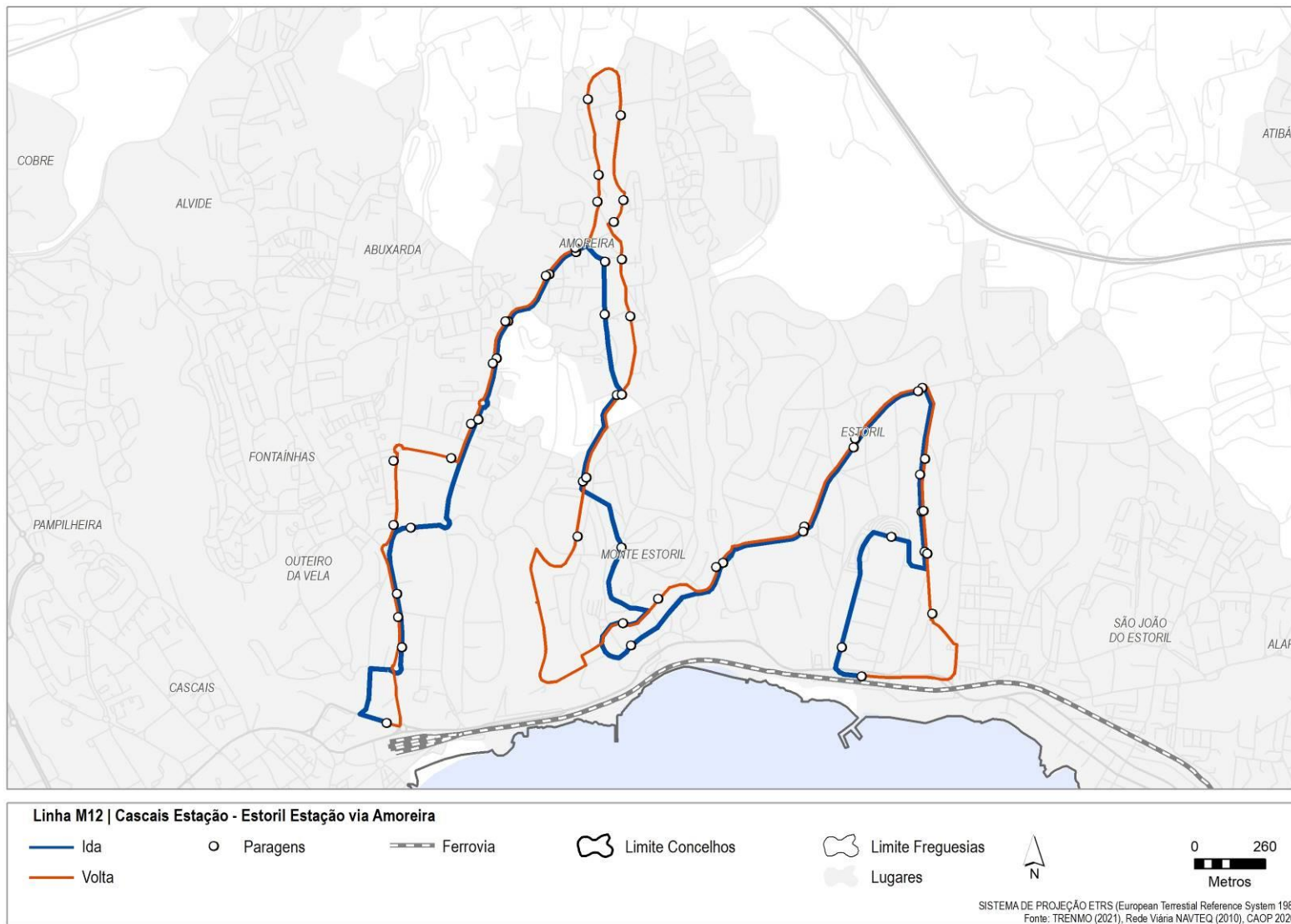


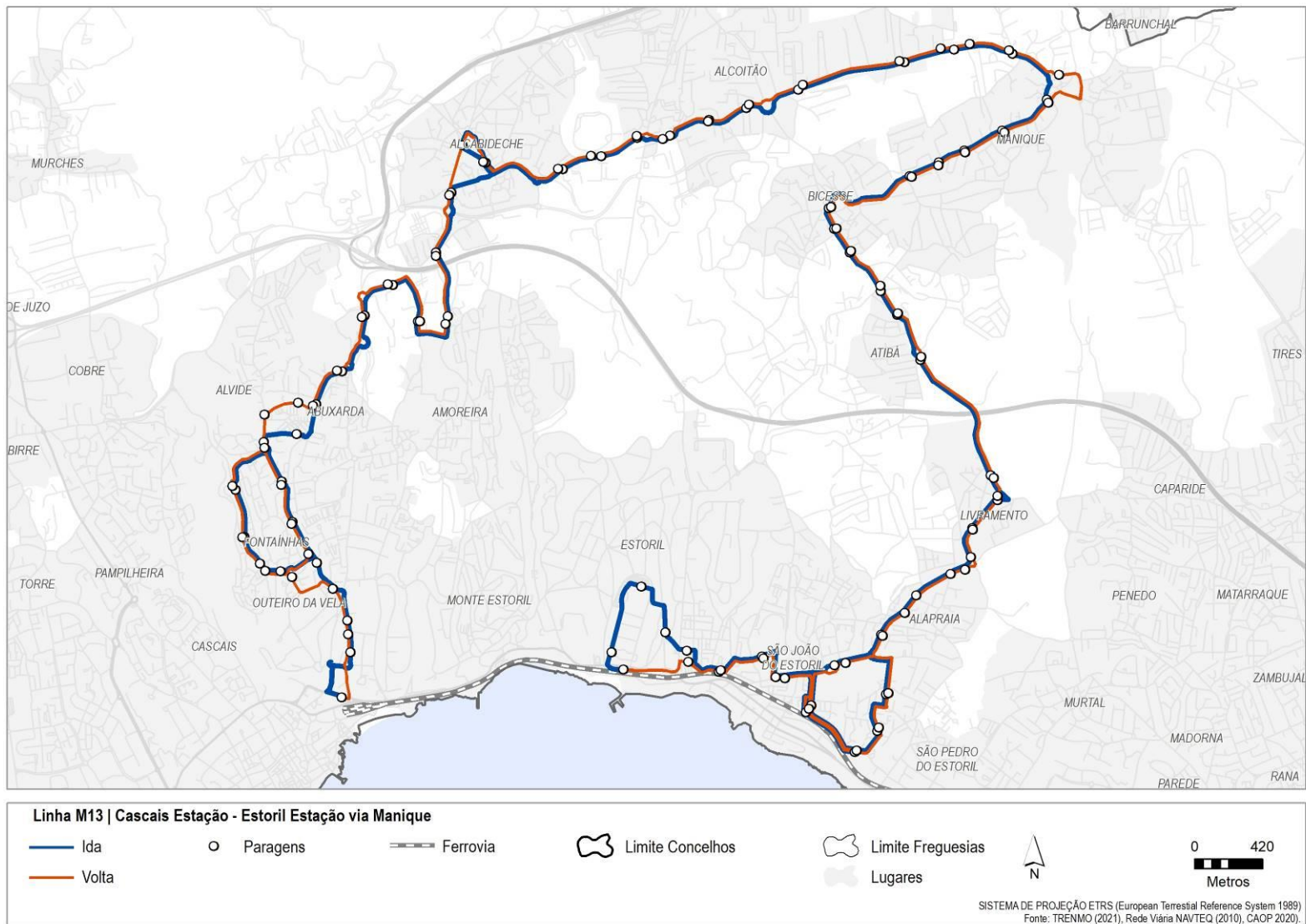










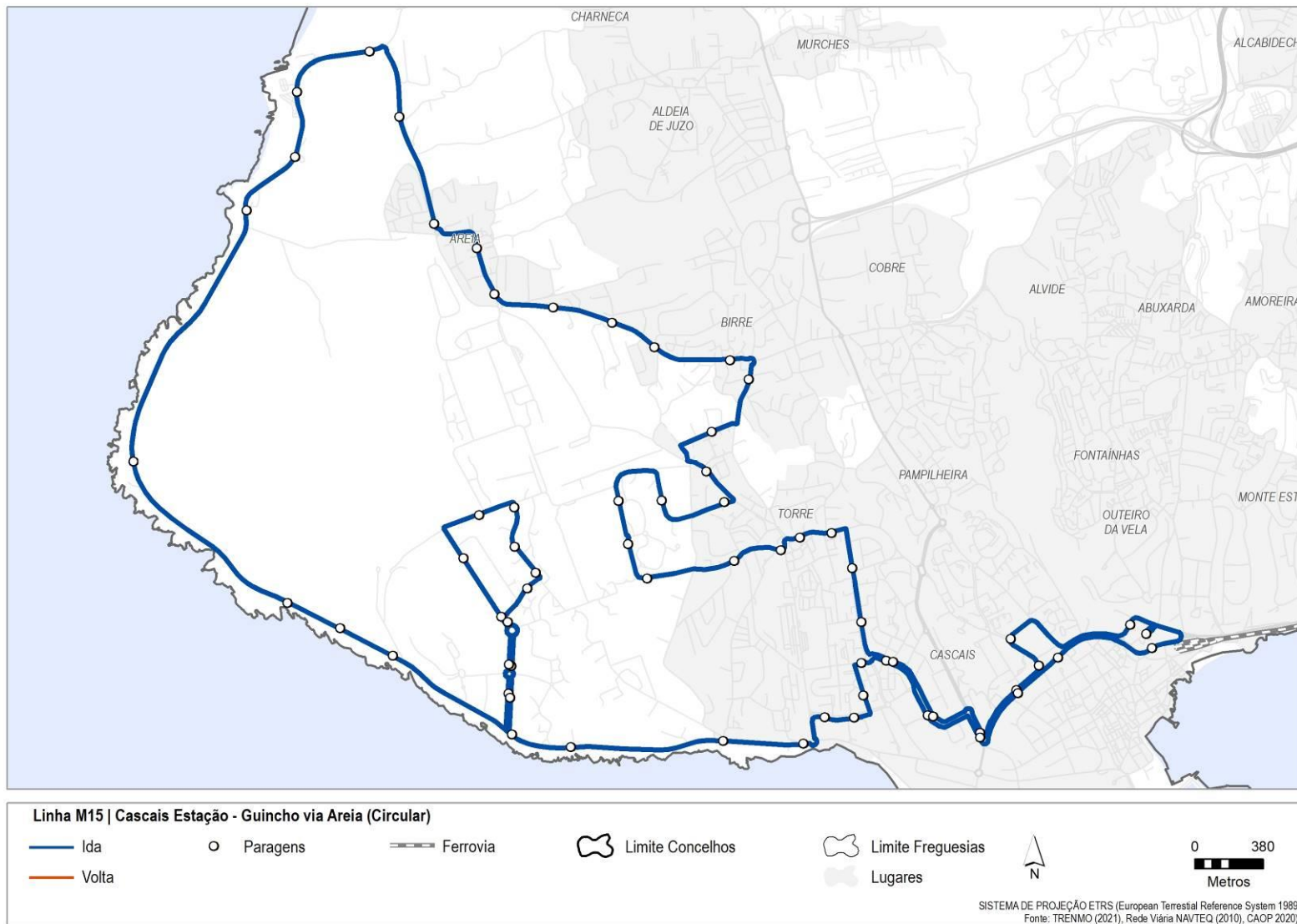


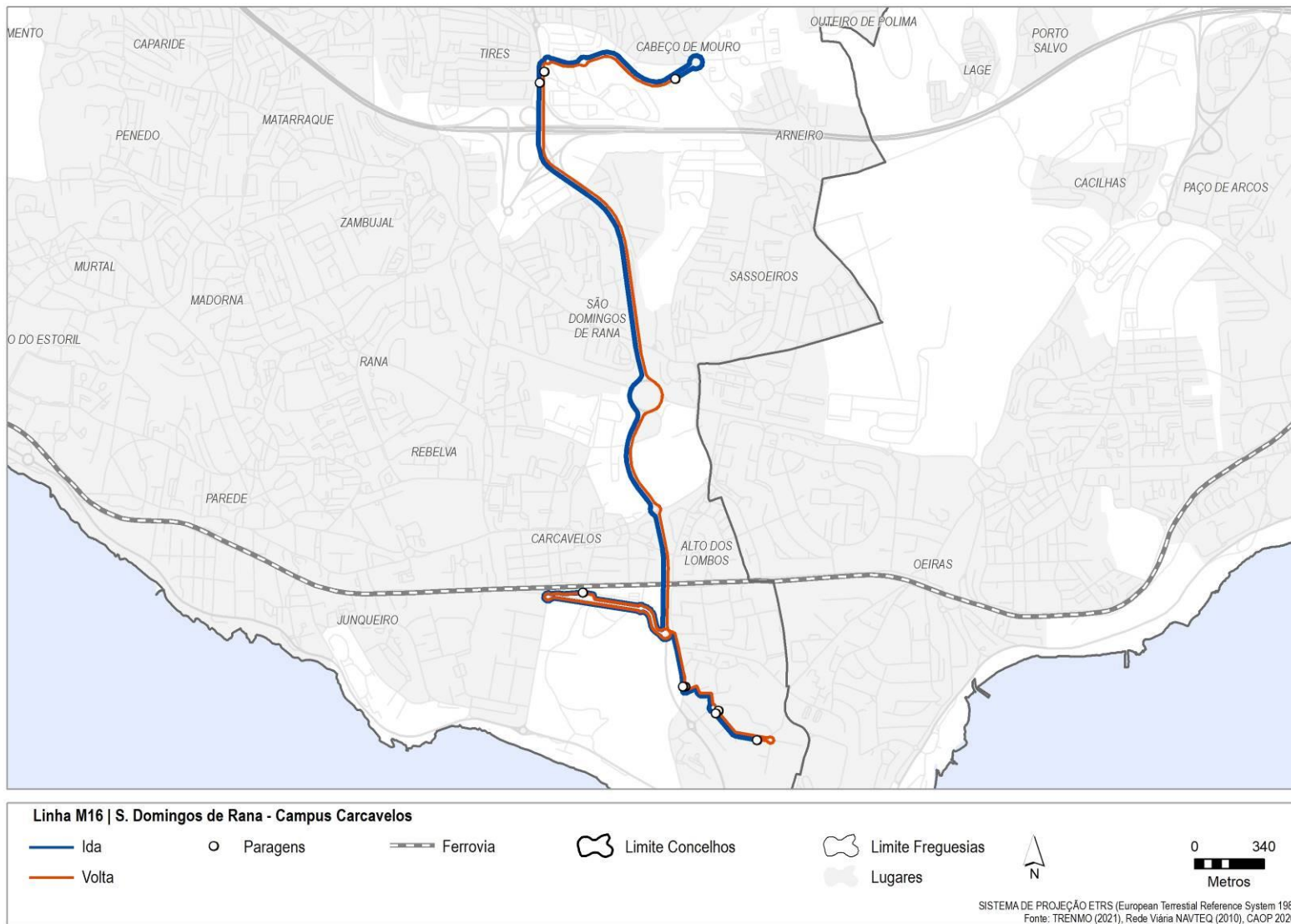


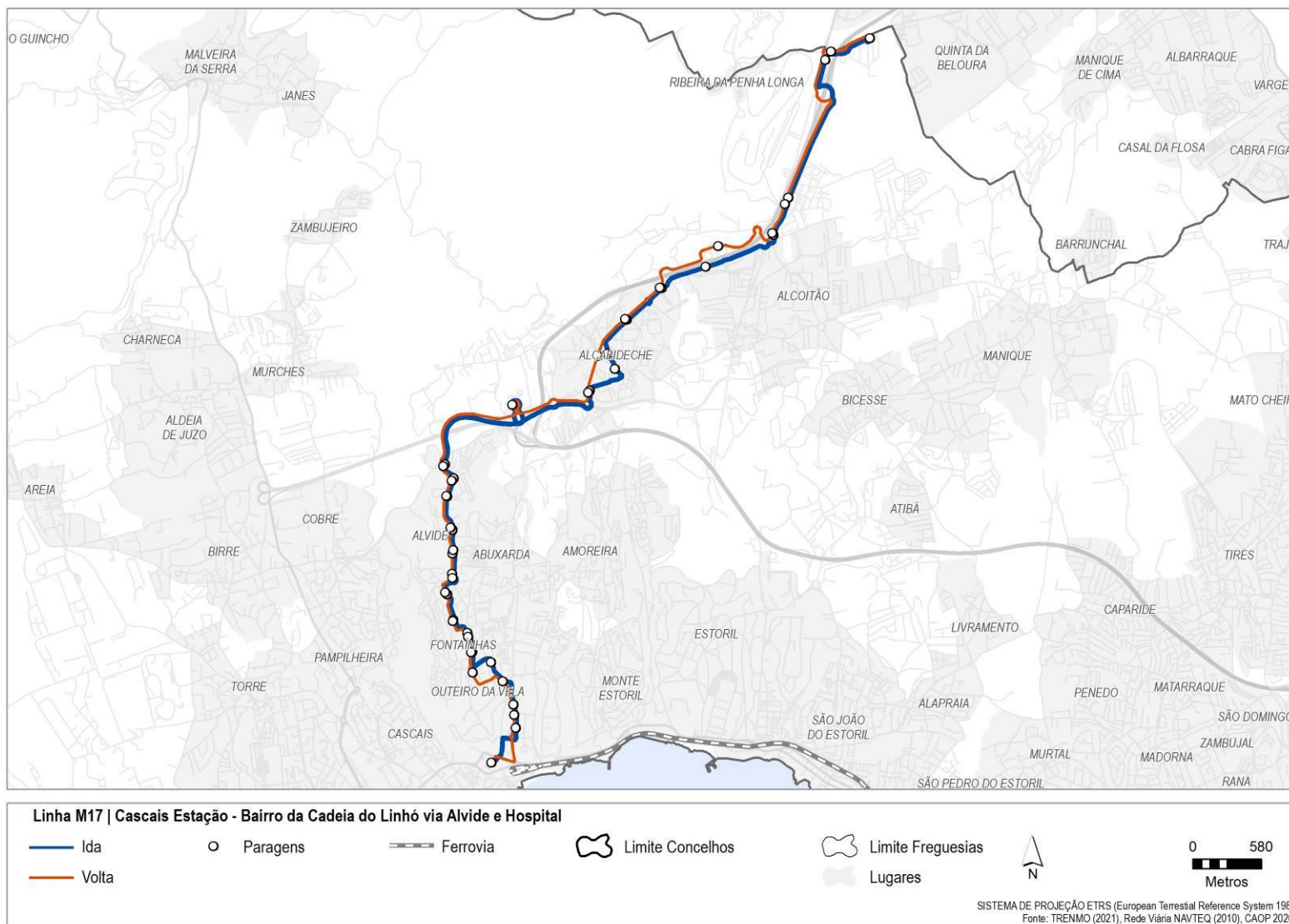
Linha M14 | Cascais Estação - Malveira via Murches (Circular)

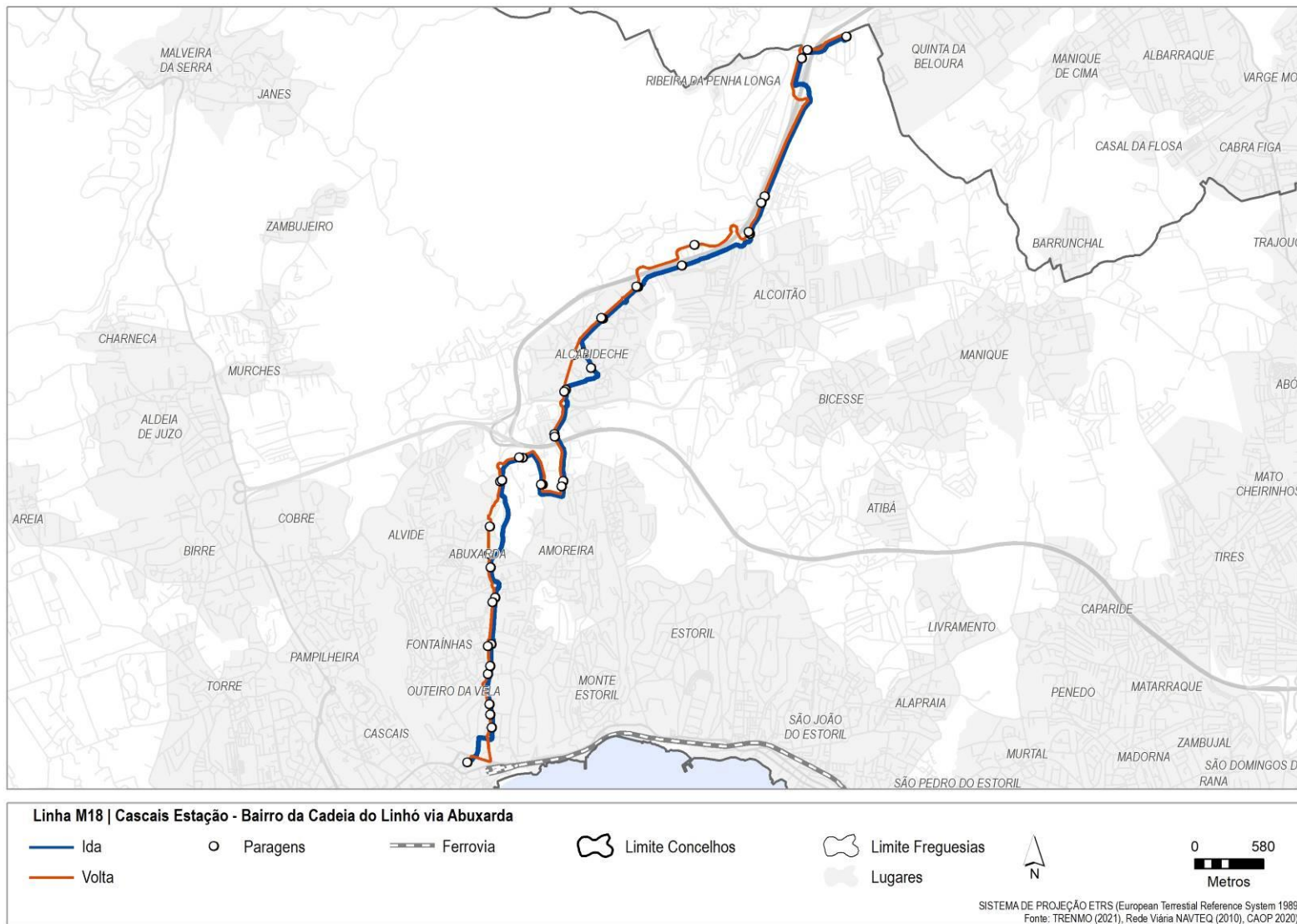
Ida	Paragens	Ferrovia	Limite Concelhos	Limite Freguesias		0 600 Metros
Volta				Lugares		

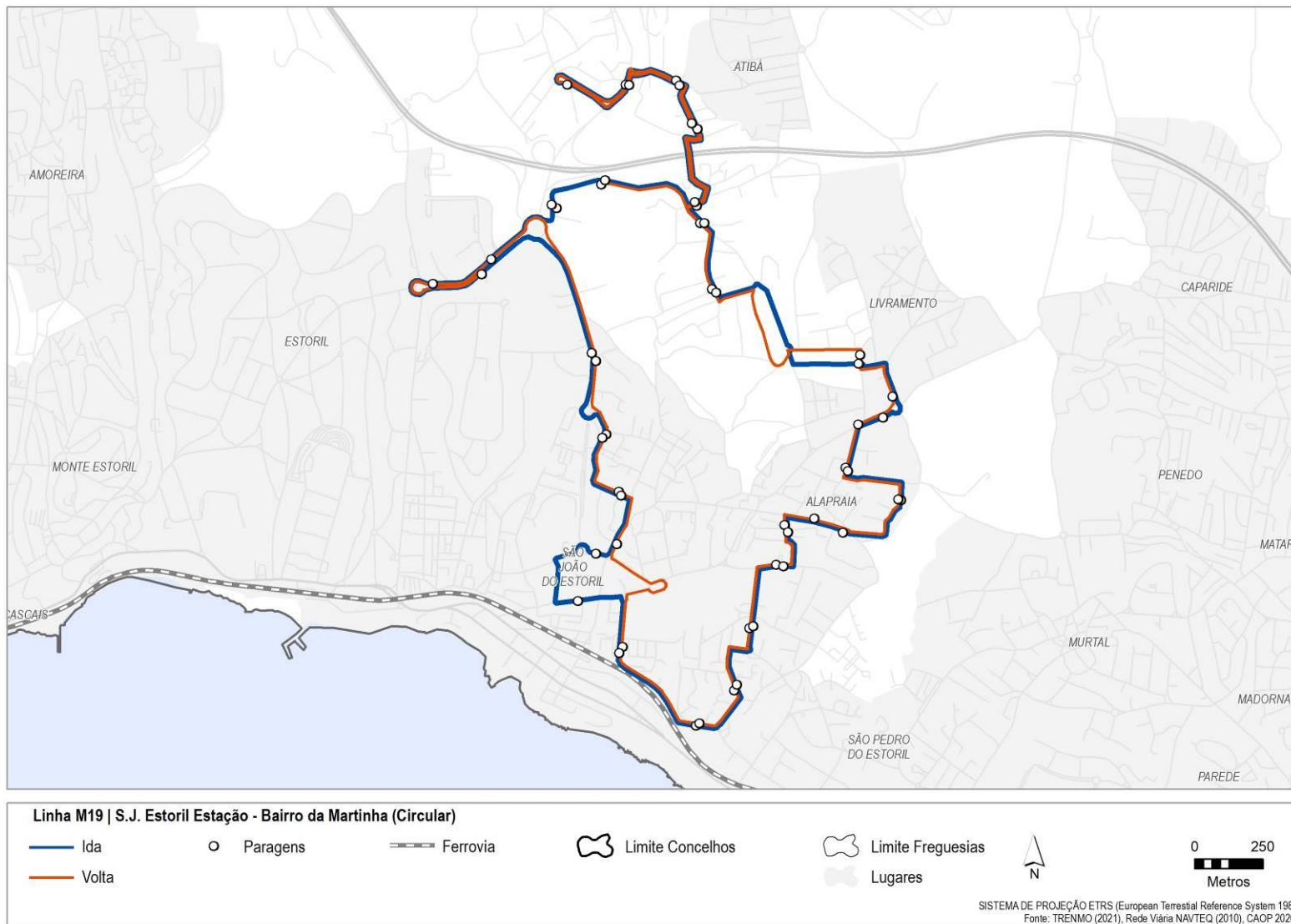
SISTEMA DE PROJEÇÃO ETRS (European Terrestrial Reference System 1989)
Fonte: TRENMO (2021), Rede Viária NAVTEQ (2010), CAOP 2020.

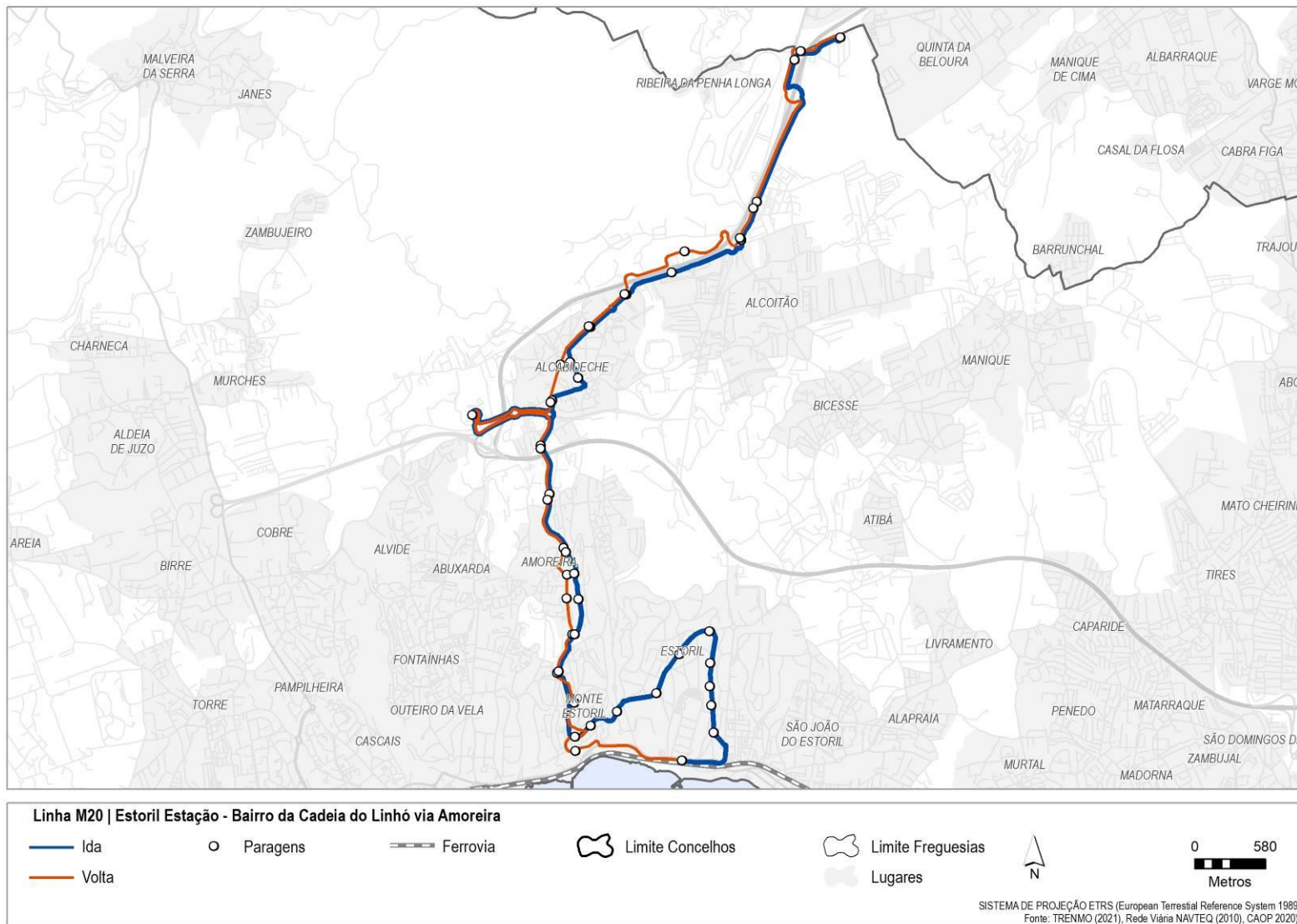


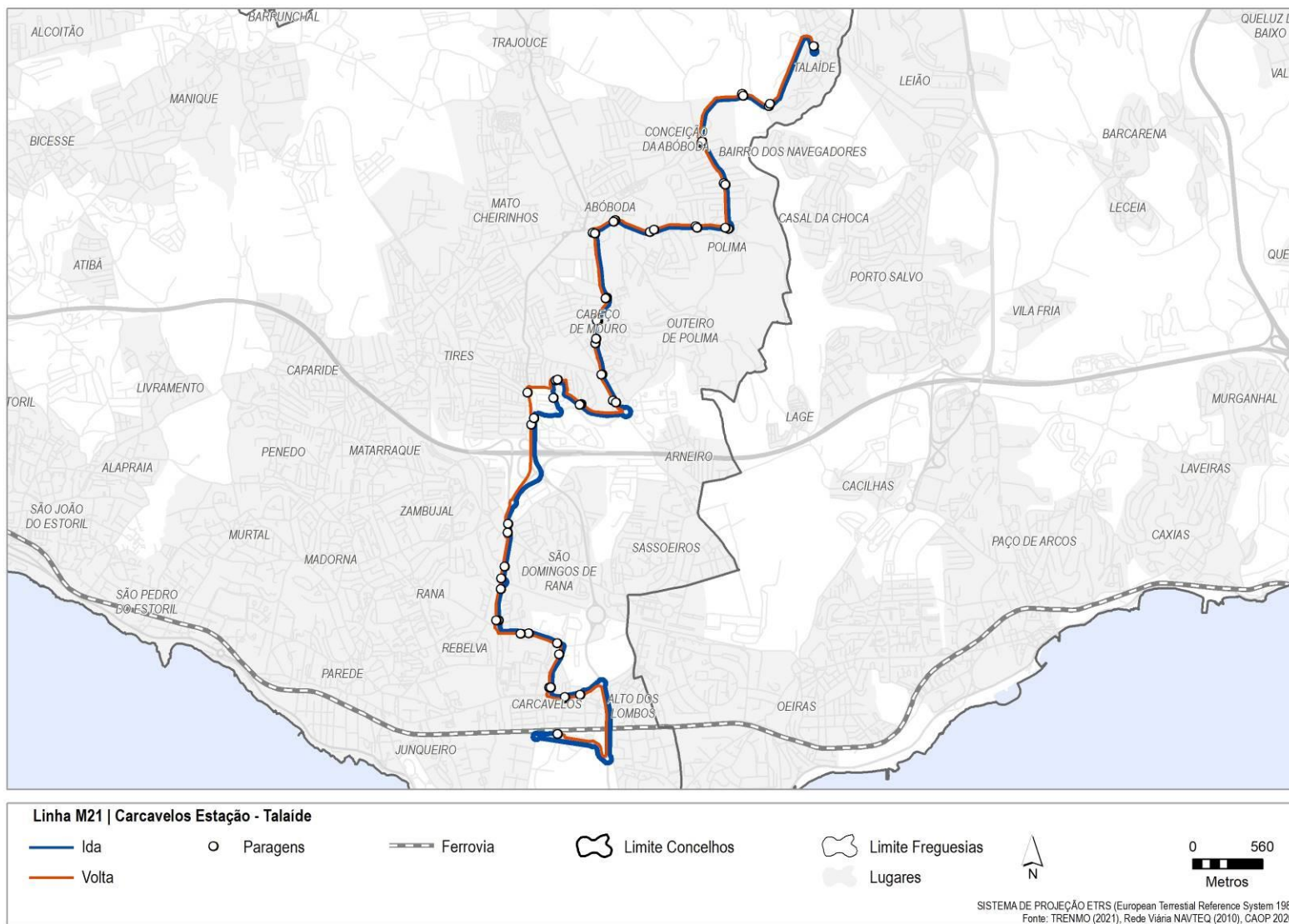


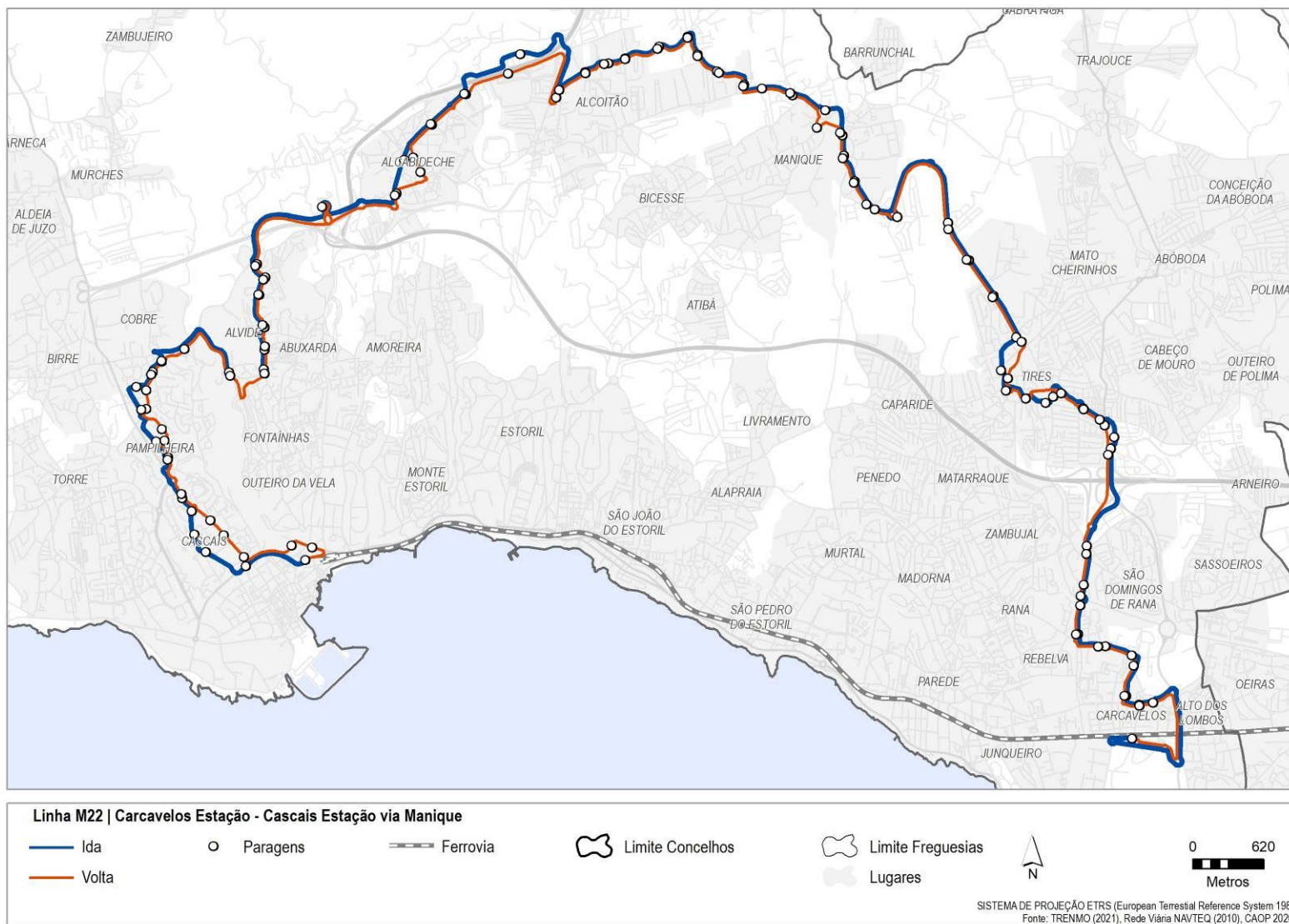


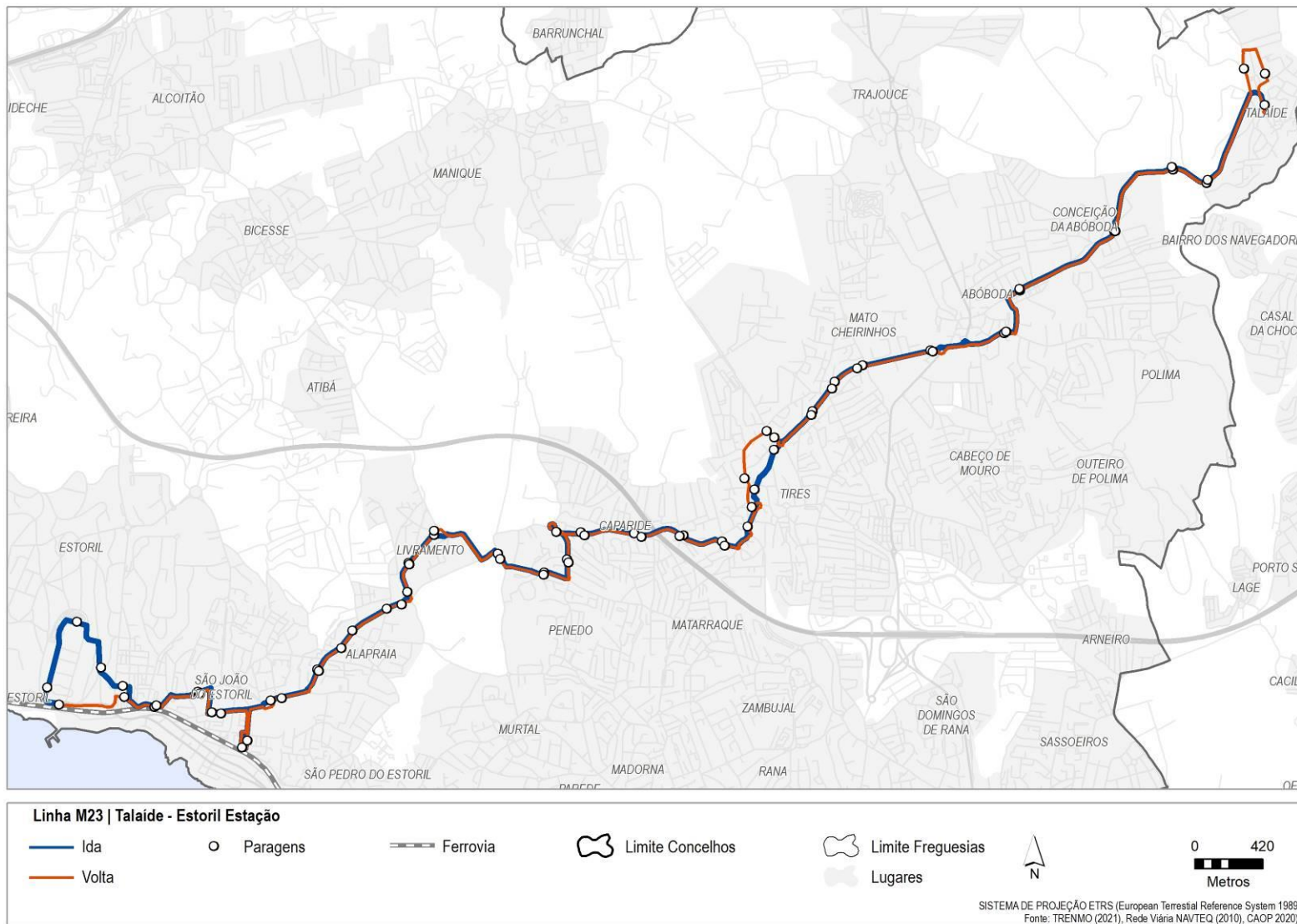


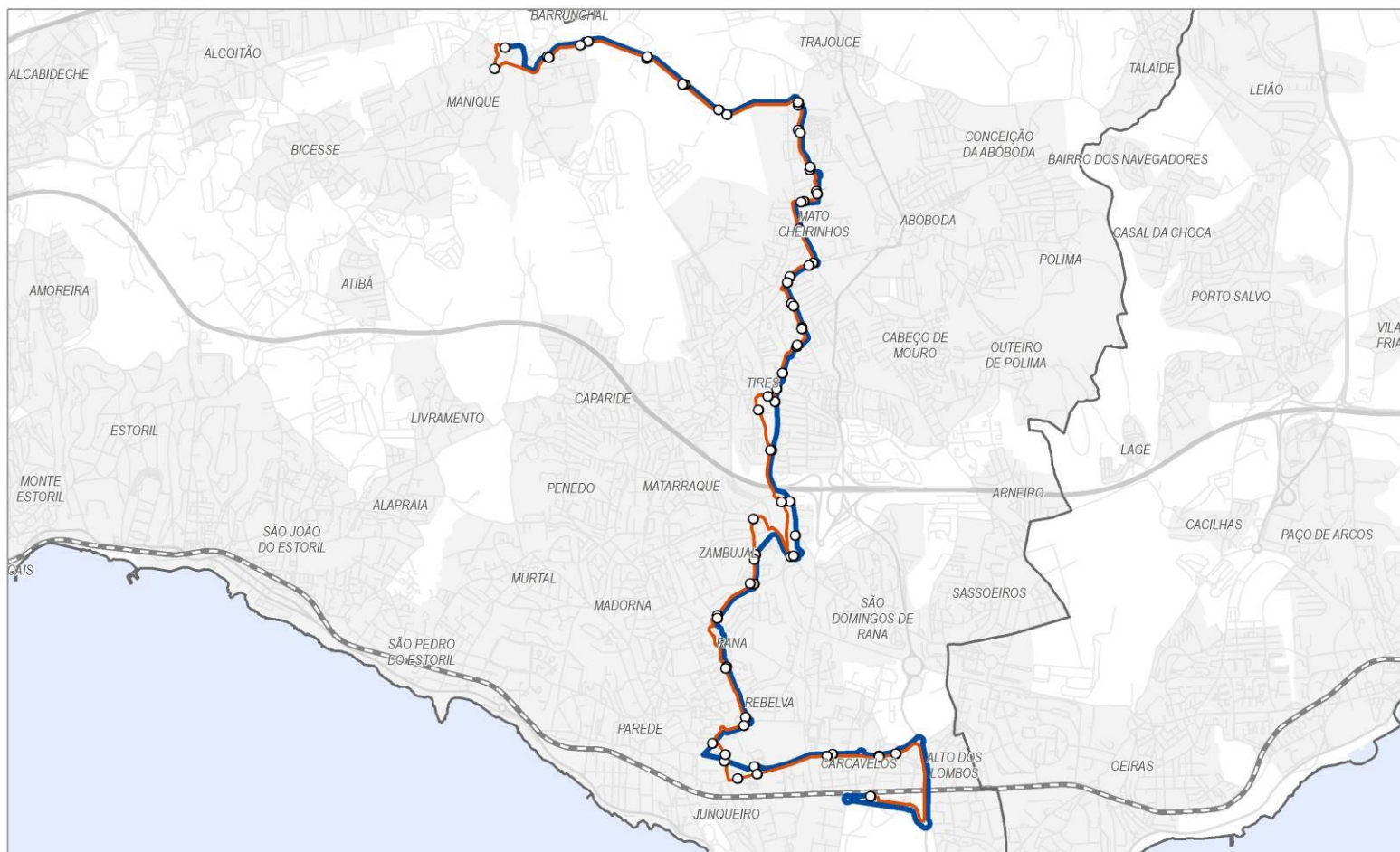










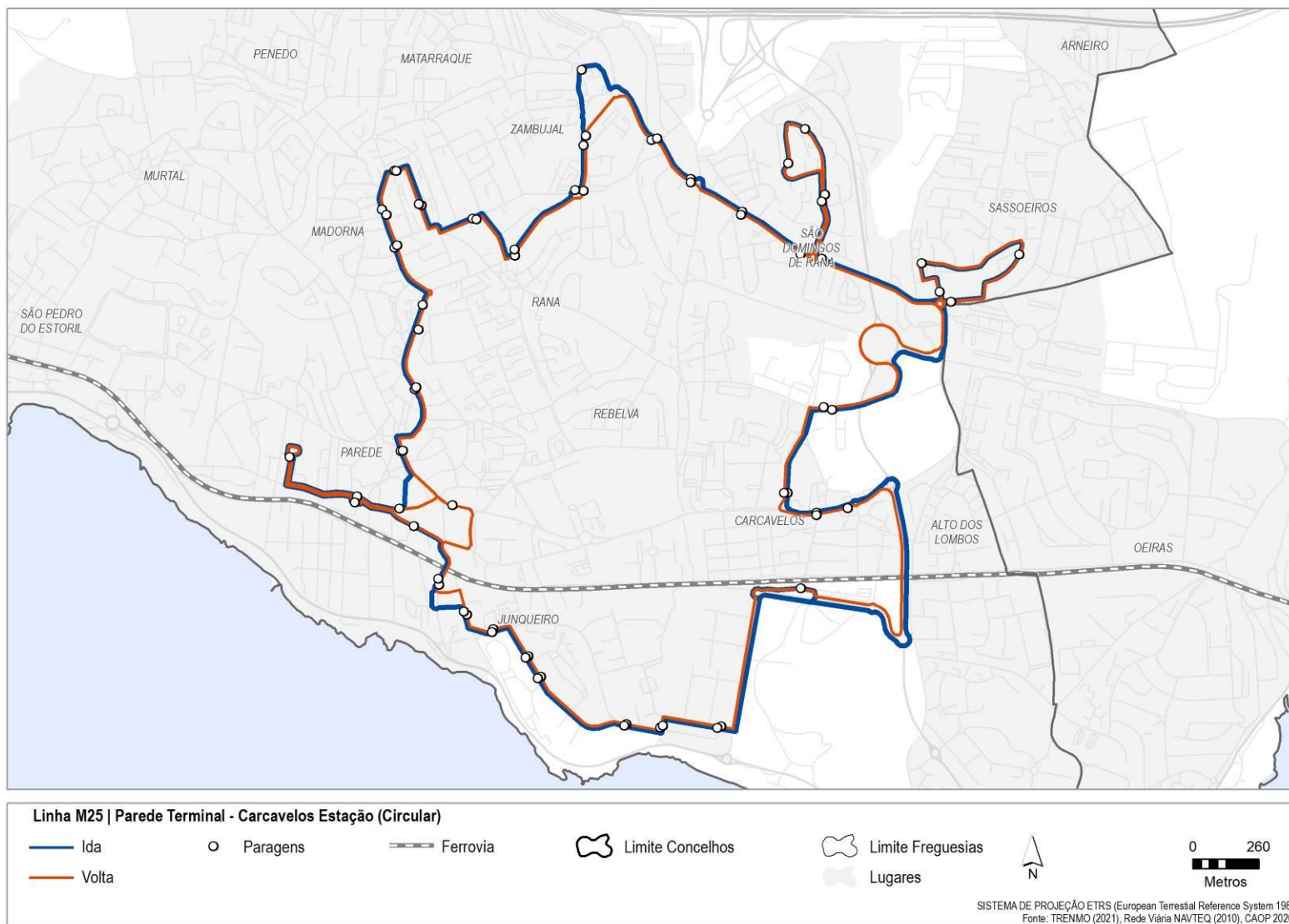


Linha M24 | Carcavelos Estação - Manique

- Ida
- Volta
- Paragens
- +—+ Ferrovia
- ⬭ Limite Concelhos
- ⬭ Limite Freguesias
- ⬭ Lugares

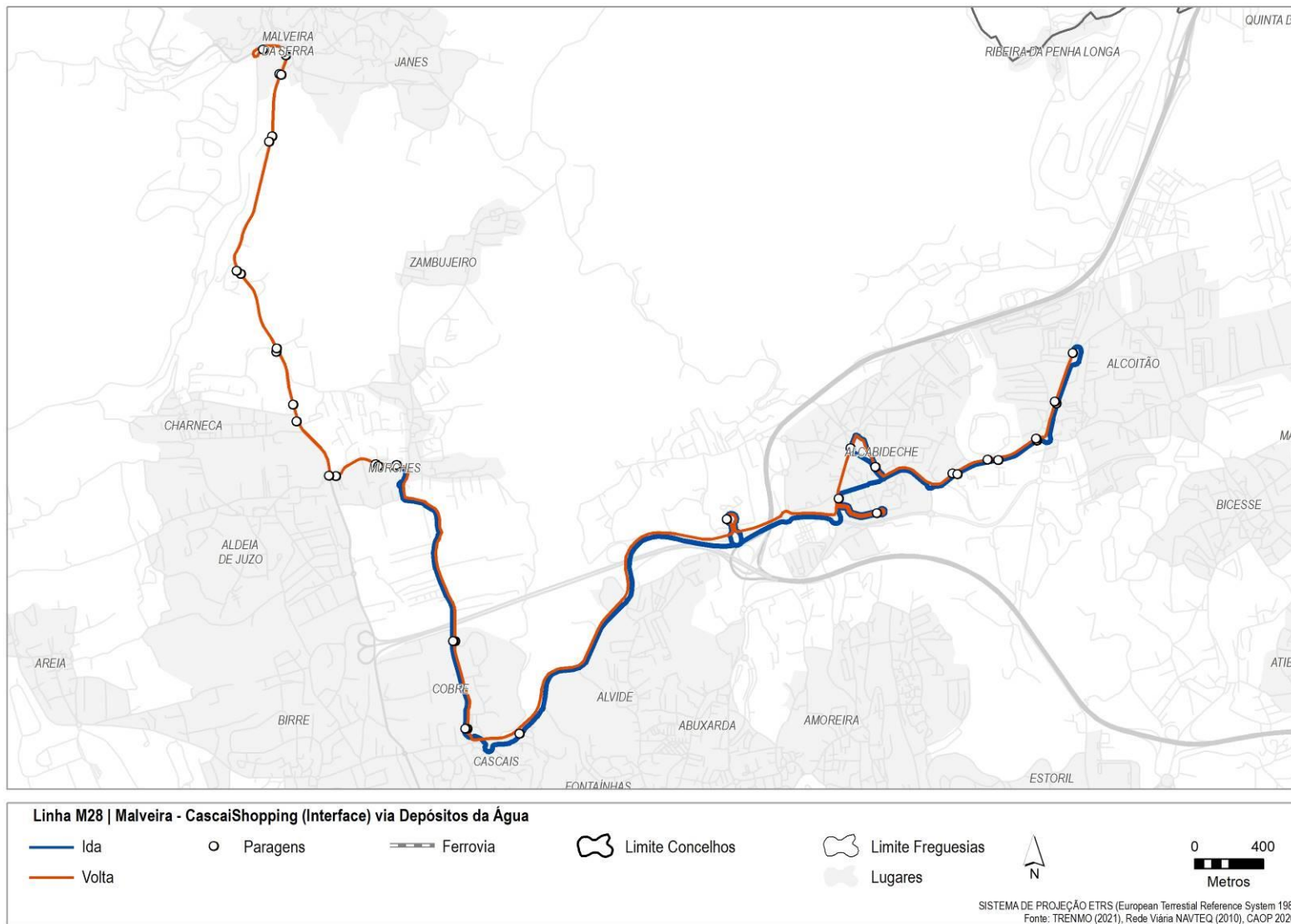
0 560
Metros

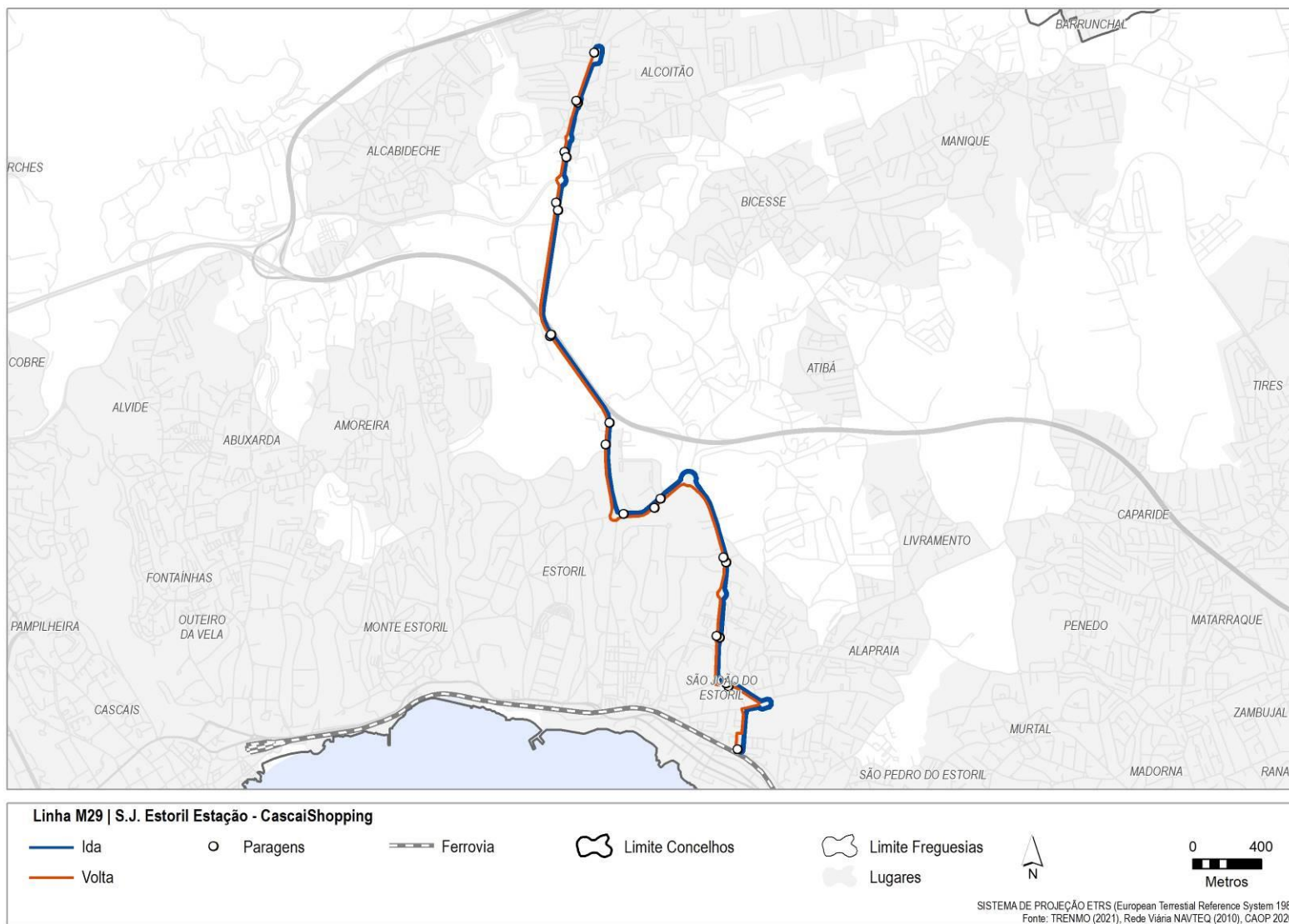
SISTEMA DE PROJEÇÃO ETRS (European Terrestrial Reference System 1989)
 Fonte: TRENMO (2021), Rede Viária NAVTEQ (2010), CAOP 2020.

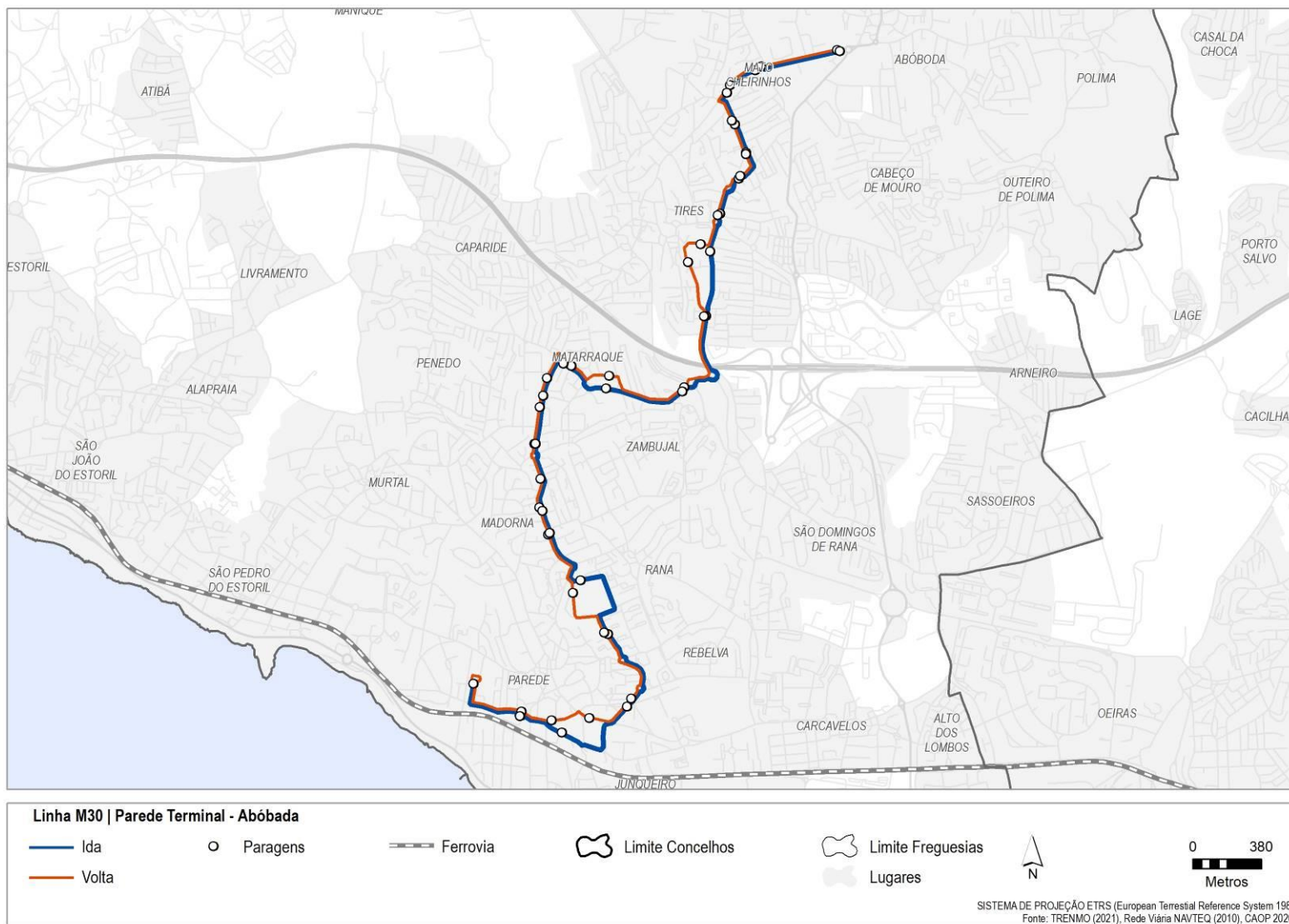


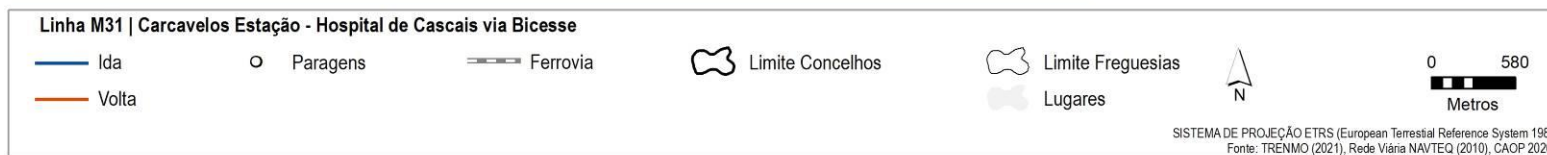
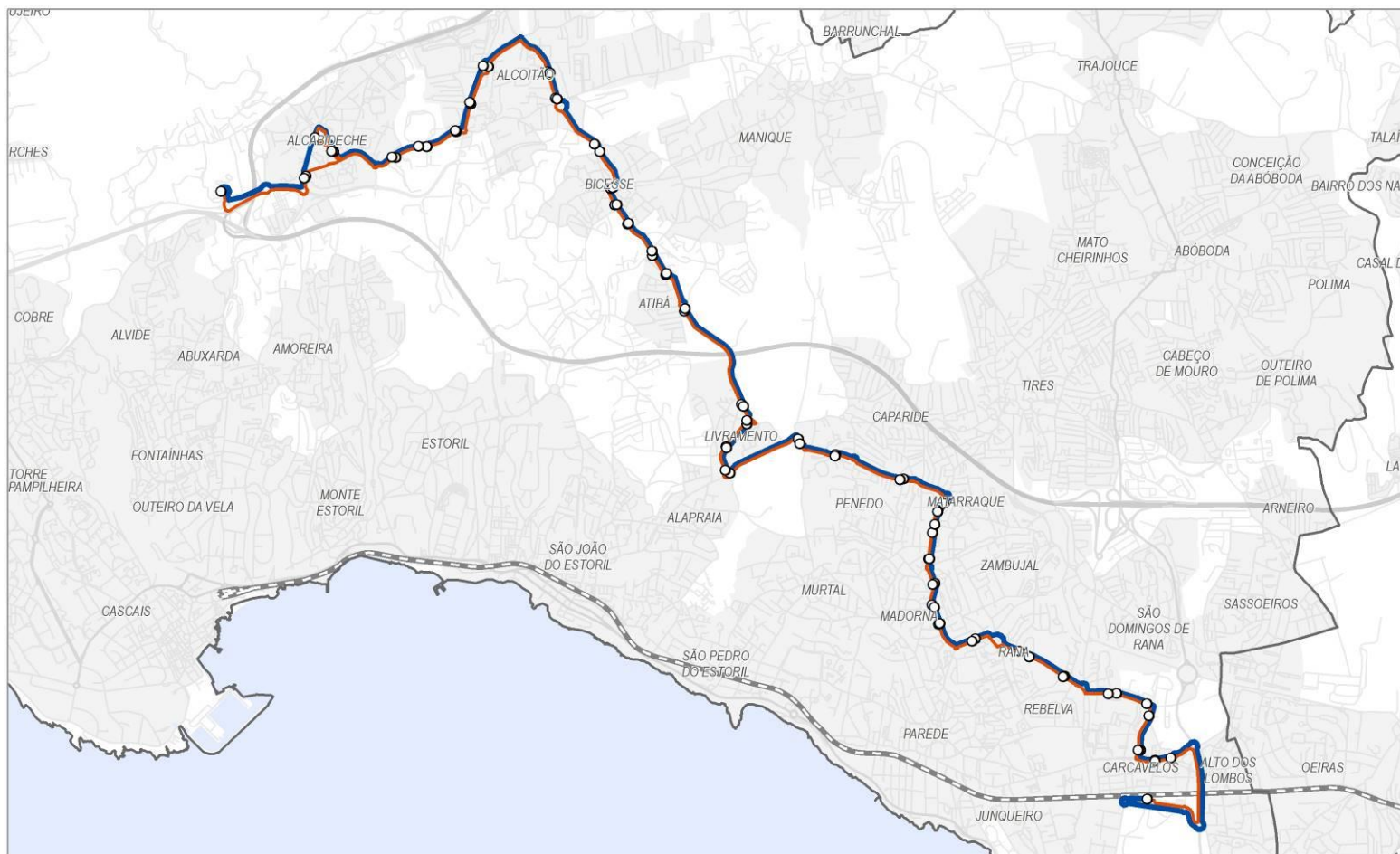


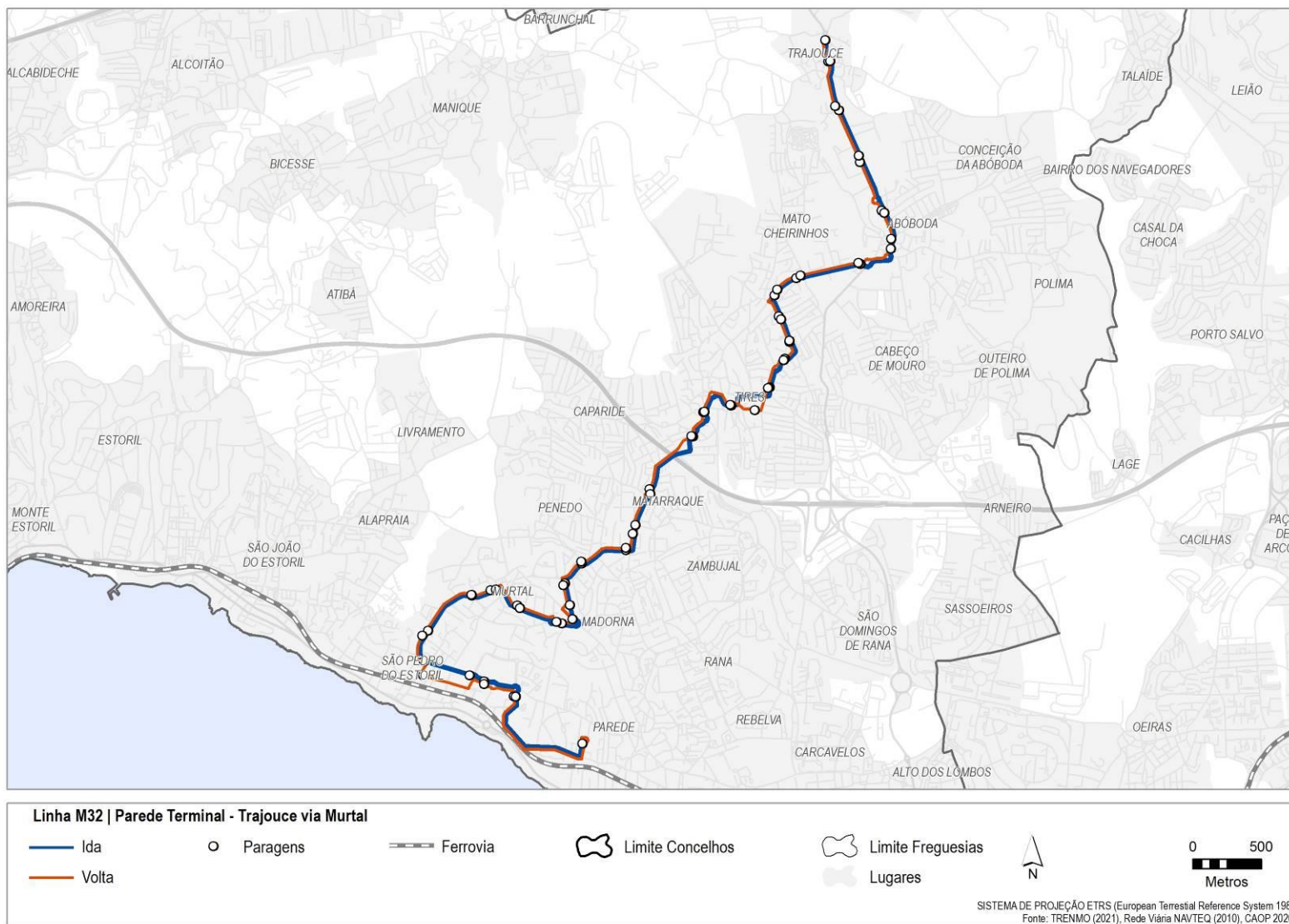


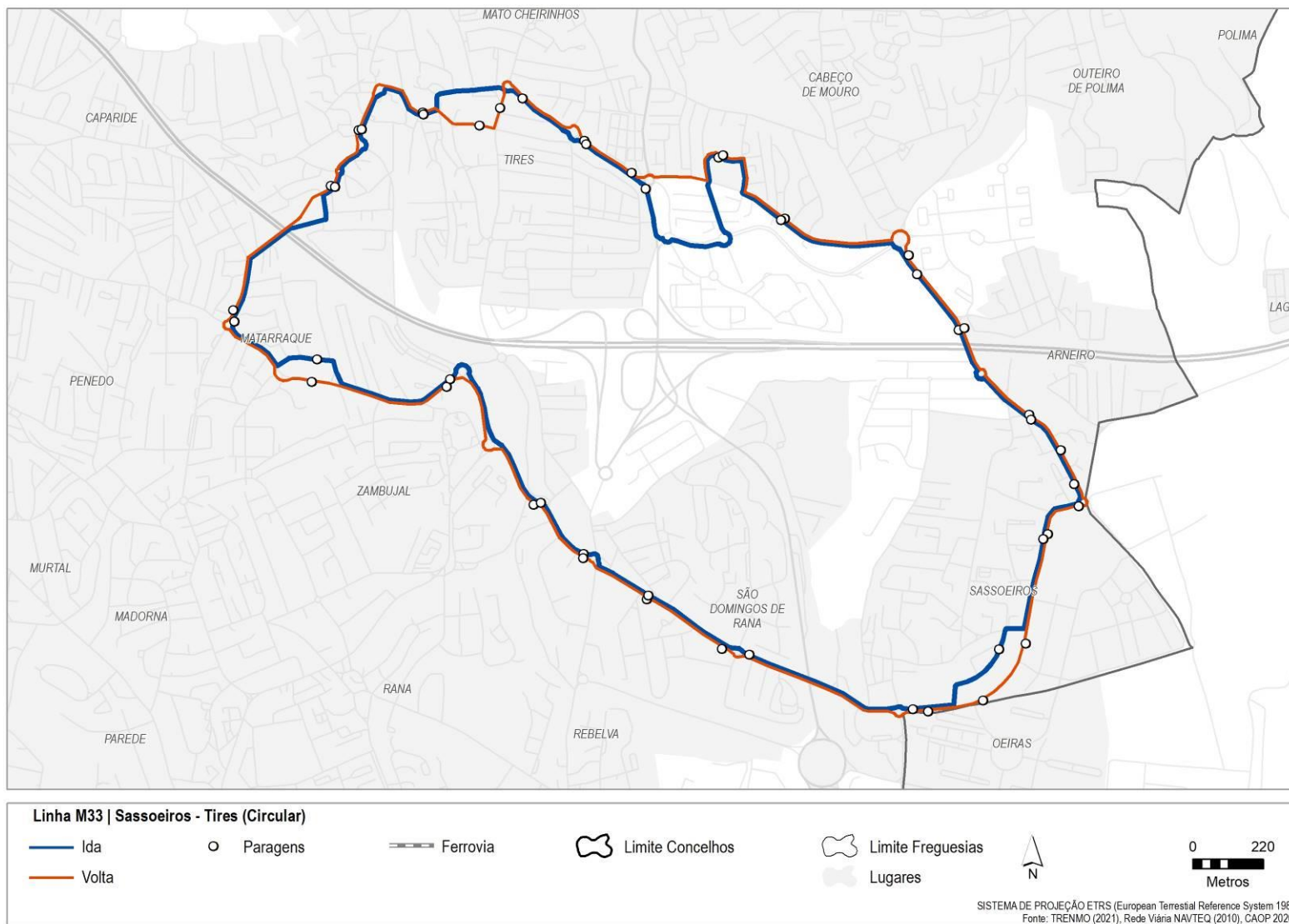


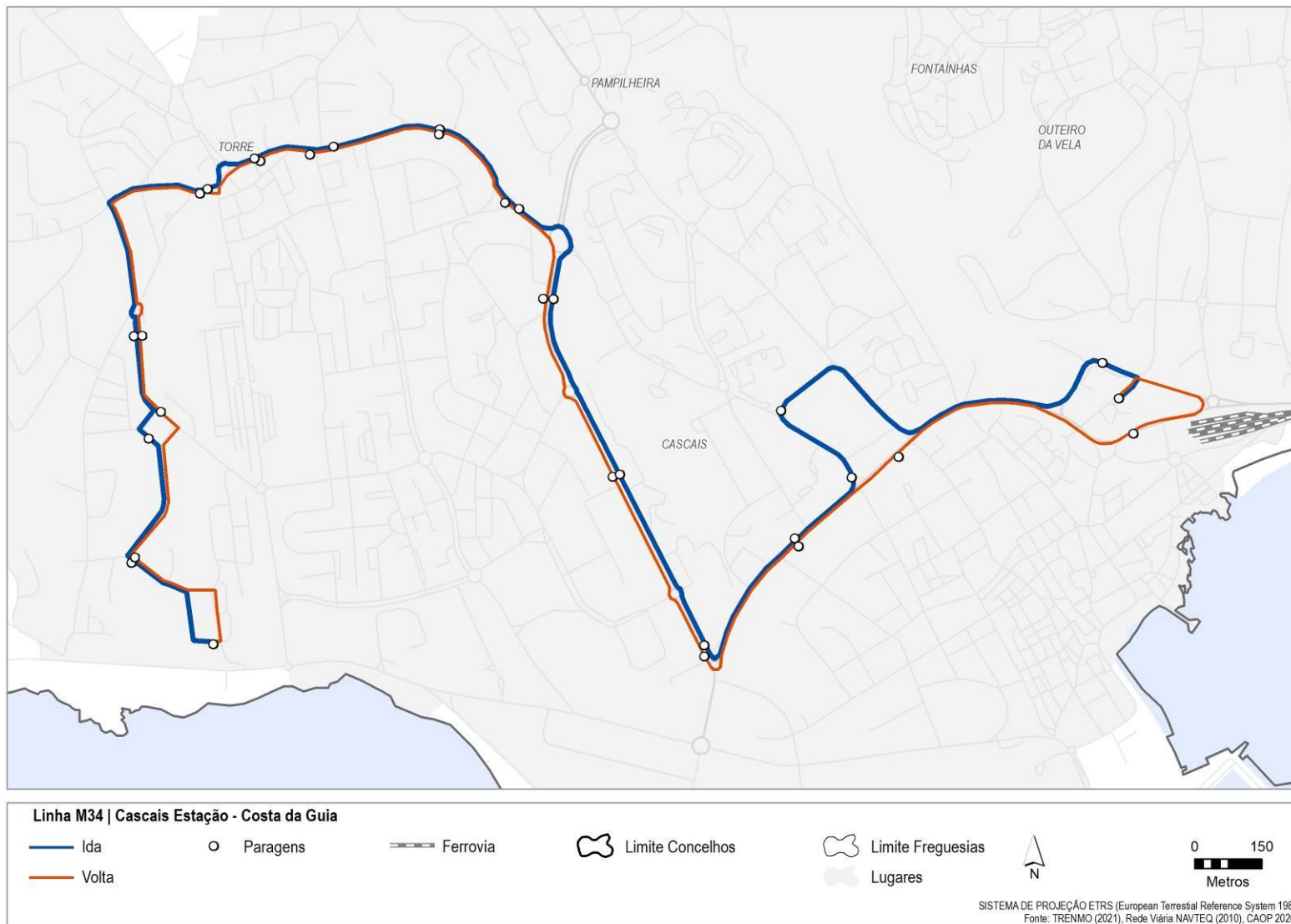


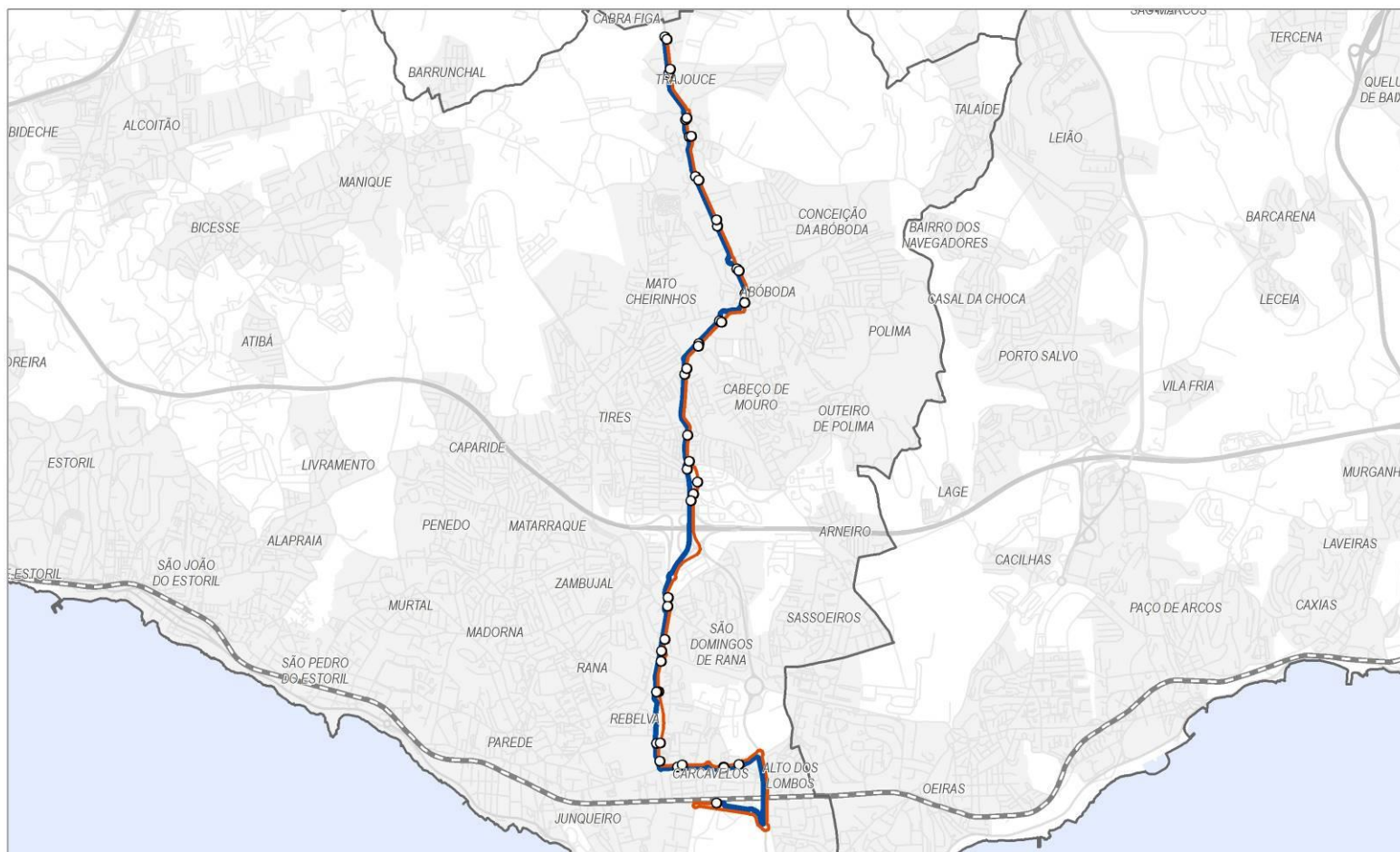












Linha M35 | Trajouce Norte - Carcavelos Estação via S. Domingos de Rana

- Ida
- Volta
- Paragens
- +— Ferrovia
- ⬭ Limite Concelhos
- ⬭ Limite Freguesias
- ⬭ Lugares

0 620
 Metros

SISTEMA DE PROJEÇÃO ETRS (European Terrestrial Reference System 1989)
 Fonte: TRENMO (2021), Rede Viária NAVTEQ (2010), CAOP 2020.

