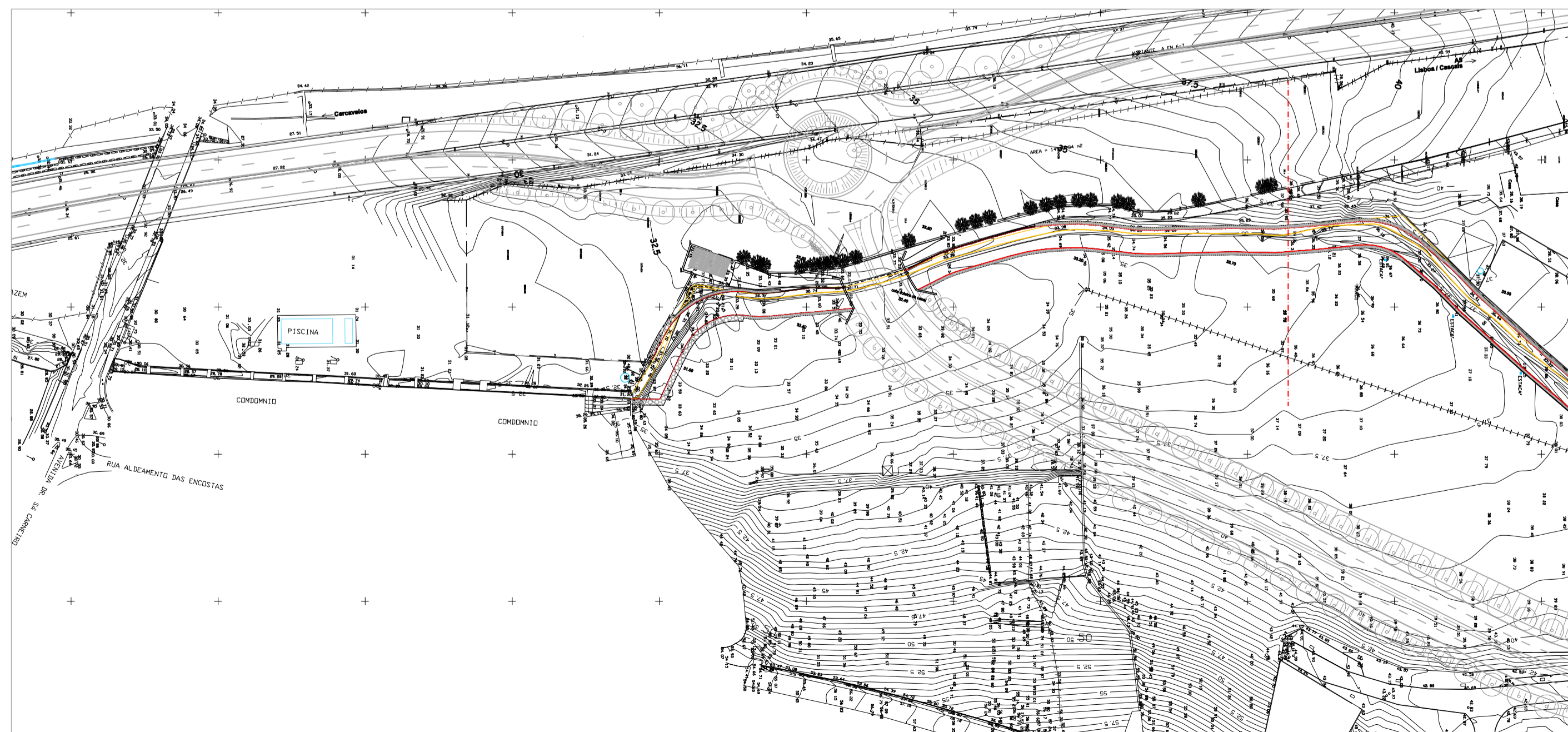
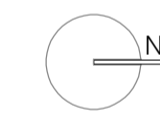





Lote da ribeira a construir (ou manter)
 Lote da ribeira a abstar

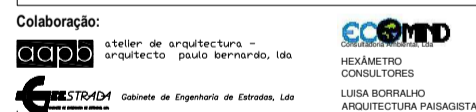


CÂMARA MUNICIPAL
 20 DEZ. 2010
 REVISÃO
 CASCAIS

DORT Divisão de Ordenamento de Território

Parcela: 

Colaboração: 

Obra:

Assunto: VIA ORIENTAL NO CONCELHO DE CASCAIS
 TROÇO 1
 VALORIZAÇÃO E REABILITAÇÃO DA RIBEIRA DE SASSOIROIS
 E PROJECTO DE ARQUITECTURA PAISAGÍSTICA

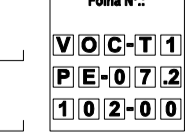
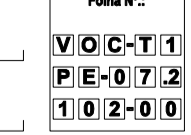
Local: SASSOIROIS - CARCAVELOS

Peça: PLANTA DE "AMRELOS" E "ENCARNADOS" DA RIBEIRA

Fase: PROJECTO DE EXECUÇÃO

Verão:

Escala: 1:200 Data: ABRIL 2009

O Técnico:  Folha Nº: 

luba/mmc/uc

25 000